

For Research Use Only

# DPP10 Recombinant Matched Antibody Pair, PBS Only



Catalog Number:MP01035-3

## Capture Antibody Information

Catalog Number:  
84127-2-PBS

Host:  
Rabbit

Isotype:  
IgG

Purification Method:  
Protein A purification

Clone ID:  
241446A5

Reactivity:  
human, mouse, rat

Immunogen Catalog Number:  
Ag3231

Conjugate:  
Unconjugated

Full name:  
dipeptidyl-peptidase 10

Gene ID:  
57628

## Detection Antibody Information

Catalog Number:  
84127-3-PBS

Host:  
Rabbit

Isotype:  
IgG

Purification Method:  
Protein A purification

Clone ID:  
241446G10

Reactivity:  
human

GenBank:  
BC030832

Immunogen Catalog Number:  
Ag3231

Conjugate:  
Unconjugated

Full name:  
dipeptidyl-peptidase 10

Gene ID:  
57628

## Applications

Tested Applications:  
Sandwich ELISA

Range:  
6.25-400 ng/mL (Sandwich ELISA)

Recommended Dilutions:  
It is recommended that this reagent should be titrated in each testing system to obtain optimal results.

## Product Information

MP01035-3 targets DPP10 in immunoassays as a matched antibody pair. Validated in Sandwich ELISA.

Capture antibody: DPP10 Recombinant antibody, PBS Only (Capture/Detector) 84127-2-PBS (241446A5). 100 µg. Concentration 1 mg/ml.

Detection antibody: DPP10 Recombinant antibody, PBS Only (Capture/Detector) 84127-3-PBS (241446G10). 100 µg. Concentration 1 mg/ml.

Alternative DPP10 matched antibody pairs: MP01035-1, MP01035-2

Unconjugated rabbit recombinant monoclonal antibody pair in PBS only storage buffer at a concentration of 1 mg/mL, ready for conjugation. Created using Proteintech's proprietary in-house recombinant technology. Recombinant production enables unrivalled batch-to-batch consistency, easy scale-up, and future security of supply.

Matched antibody pairs are designed for use in a variety of assays and platforms that require matched antibody pairs.

Antibody use should be optimized for each application and assay.

## Storage

Storage:  
Store at -80°C.  
Storage buffer:  
PBS only

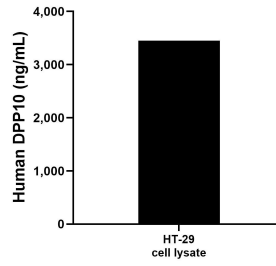
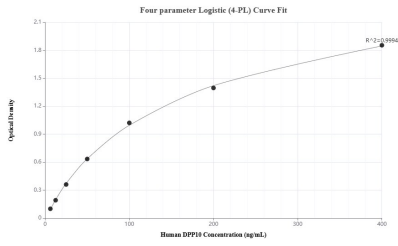
For technical support and original validation data for this product please contact:

T: 1 (888) 4PTGLAB (1-888-478-4522) (toll free in USA), or 1(312) 455-8498 (outside USA)

E: [proteintech@ptglab.com](mailto:proteintech@ptglab.com)  
W: [ptglab.com](http://ptglab.com)

This product is exclusively available under Proteintech Group brand and is not available to purchase from any other manufacturer.

## Selected Validation Data



Sandwich ELISA standard curve of MP01035-3, Human DPP10 Recombinant Matched Antibody Pair - PBS only. 84127-2-PBS was coated to a plate as the capture antibody and incubated with serial dilutions of standard Ag3231. 84127-3-PBS was HRP conjugated as the detection antibody. Range: 6.25-400 ng/mL

HT-29 cell lysate was measured. The human DPP10 concentration of detected samples was determined to be 3,448.25 ng/mL (based on a 4.4 mg/mL extract load).