

For Research Use Only

# Complement factor B Recombinant Matched Antibody Pair, PBS Only



Catalog Number:MP01031-4

## Capture Antibody Information

Catalog Number:

84101-10-PBS

Host:

Rabbit

Isotype:

IgG

Purification Method:

Protein A purification

Clone ID:

242709A6

Reactivity:

human

Conjugate:

Unconjugated

Full name:

complement factor B

Gene ID:

629

## Detection Antibody Information

Catalog Number:

84101-8-PBS

Host:

Rabbit

Isotype:

IgG

Purification Method:

Protein A purification

Clone ID:

242709A2

Reactivity:

human

GenBank:

NM\_001710.6

Conjugate:

Unconjugated

Full name:

complement factor B

Gene ID:

629

## Applications

Tested Applications:

Sandwich ELISA

Range:

78.1-5000 pg/mL (Sandwich ELISA)

Recommended Dilutions:

It is recommended that this reagent should be titrated in each testing system to obtain optimal results.

## Product Information

MP01031-4 targets Complement factor B in immunoassays as a matched antibody pair. Validated in Sandwich ELISA.

Capture antibody: Complement factor B Recombinant antibody, PBS Only (Capture) 84101-10-PBS (242709A6). 100 µg. Concentration 1 mg/mL.

Detection antibody: Complement factor B Recombinant antibody, PBS Only (Detector) 84101-8-PBS (242709A2). 100 µg. Concentration 1 mg/mL.

Unconjugated rabbit recombinant monoclonal antibody pair in PBS only storage buffer at a concentration of 1 mg/mL, ready for conjugation. Created using Proteintech's proprietary in-house recombinant technology. Recombinant production enables unrivalled batch-to-batch consistency, easy scale-up, and future security of supply.

Matched antibody pairs are designed for use in a variety of assays and platforms that require matched antibody pairs.

Antibody use should be optimized for each application and assay.

## Storage

Storage:

Store at -80°C.

Storage buffer:

PBS only

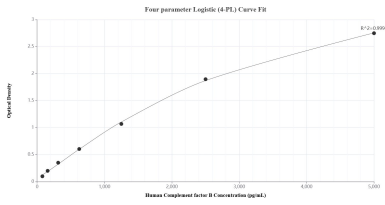
For technical support and original validation data for this product please contact:

T: 1 (888) 4PTGLAB (1-888-478-4522) (toll free in USA), or 1(312) 455-8498 (outside USA)

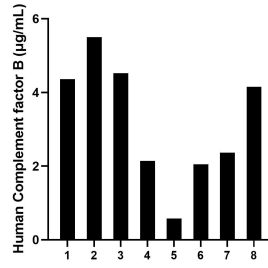
E: [proteintech@ptglab.com](mailto:proteintech@ptglab.com)  
W: [ptglab.com](http://ptglab.com)

This product is exclusively available under Proteintech Group brand and is not available to purchase from any other manufacturer.

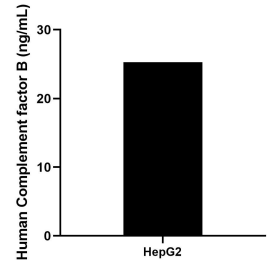
## Selected Validation Data



Sandwich ELISA standard curve of MP01031-4, Human Complement factor B Recombinant Matched Antibody Pair - PBS only. 84101-10-PBS was coated to a plate as the capture antibody and incubated with serial dilutions of standard Eg1224. 84101-8-PBS was HRP conjugated as the detection antibody. Range: 78.1-5000 pg/mL



Serum of eight individual healthy human donors was measured. The Complement factor B concentration of detected samples was determined to be 3.2 µg/mL with a range of 0.6-5.5 µg/mL



The mean Complement factor B concentration was determined to be 25.3 ng/mL in HepG2 cell extract based on a 1.8 mg/mL extract load.