

For Research Use Only

PPID Recombinant Matched Antibody Pair, PBS Only



Catalog Number:MP01018-4

Capture Antibody Information

Catalog Number:

84115-7-PBS

Host:

Rabbit

Isotype:

IgG

Purification Method:

Protein A purification

Clone ID:

241361B10

Reactivity:

human

Immunogen Catalog Number:

Ag3409

Conjugate:

Unconjugated

Full name:

peptidylprolyl isomerase D

Gene ID:

5481

Detection Antibody Information

Catalog Number:

84115-2-PBS

Host:

Rabbit

Isotype:

IgG

Purification Method:

Protein A purification

Clone ID:

241361B5

Reactivity:

human

GenBank:

BC030707

Immunogen Catalog Number:

Ag3409

Conjugate:

Unconjugated

Full name:

peptidylprolyl isomerase D

Gene ID:

5481

Applications

Tested Applications:

Sandwich ELISA

Range:

0.313-20 ng/mL (Sandwich ELISA)

Recommended Dilutions:

It is recommended that this reagent should be titrated in each testing system to obtain optimal results.

Product Information

MP01018-4 targets PPID in immunoassays as a matched antibody pair. Validated in Sandwich ELISA.

Capture antibody: PPID Recombinant antibody, PBS Only (Capture) 84115-7-PBS (241361B10). 100 µg. Concentration 1 mg/mL.

Detection antibody: PPID Recombinant antibody, PBS Only (Detector) 84115-2-PBS (241361B5). 100 µg. Concentration 1 mg/mL.

Alternative PPID matched antibody pairs: MP01018-1, MP01018-2, MP01018-3

Unconjugated rabbit recombinant monoclonal antibody pair in PBS only storage buffer at a concentration of 1 mg/mL, ready for conjugation. Created using Proteintech's proprietary in-house recombinant technology. Recombinant production enables unrivalled batch-to-batch consistency, easy scale-up, and future security of supply.

Matched antibody pairs are designed for use in a variety of assays and platforms that require matched antibody pairs.

Antibody use should be optimized for each application and assay.

Storage

Storage:

Store at -80°C.

Storage buffer:

PBS only

For technical support and original validation data for this product please contact:

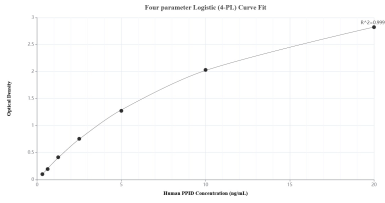
T: 1 (888) 4PTGLAB (1-888-478-4522) (toll free in USA), or 1(312) 455-8498 (outside USA)

E: proteintech@ptglab.com

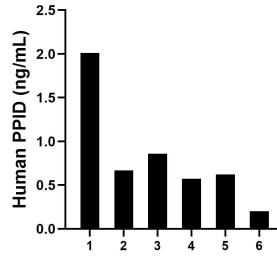
W: ptglab.com

This product is exclusively available under Proteintech Group brand and is not available to purchase from any other manufacturer.

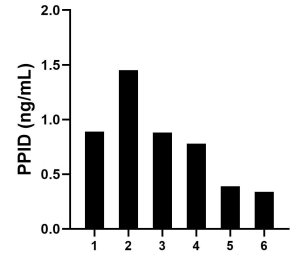
Selected Validation Data



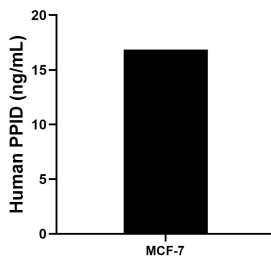
Sandwich ELISA standard curve of MP01018-4, Human PPID Recombinant Matched Antibody Pair - PBS only. 84115-7-PBS was coated to a plate as the capture antibody and incubated with serial dilutions of standard Ag3409. 84115-2-PBS was HRP conjugated as the detection antibody. Range: 0.313-20 ng/mL



Serum of six individual healthy human donors was measured. The PPID concentration of detected samples was determined to be 0.82 ng/mL with a range of 0.20-2.01 ng/mL.



Serum of six rats was measured. The PPID concentration of detected samples was determined to be 0.79 ng/mL with a range of 0.34-1.45 ng/mL.



The mean PPID concentration was determined to be 16.84 ng/mL in MCF-7 cell extract based on a 1.20 mg/mL extract load.