

For Research Use Only

MIRO1 Recombinant Matched Antibody Pair, PBS Only



Catalog Number:MP01000-4

Capture Antibody Information

Catalog Number:
84055-7-PBS

Host:
Rabbit

Isotype:
IgG

Purification Method:
Protein A purification

Clone ID:
241157A9

Reactivity:
human

Immunogen Catalog Number:
Ag15605

Conjugate:
Unconjugated

Full name:
ras homolog gene family, member T1

Gene ID:
55288

Detection Antibody Information

Catalog Number:
84055-6-PBS

Host:
Rabbit

Isotype:
IgG

Purification Method:
Protein A purification

Clone ID:
241157F10

Reactivity:
human

GenBank:
BC060781

Immunogen Catalog Number:
Ag15605

Conjugate:
Unconjugated

Full name:
ras homolog gene family, member T1

Gene ID:
55288

Applications

Tested Applications:
Sandwich ELISA

Range:
0.625-40 ng/mL (Sandwich ELISA)

Recommended Dilutions:
It is recommended that this reagent should be titrated in each testing system to obtain optimal results.

Product Information

MP01000-4 targets MIRO1 in immunoassays as a matched antibody pair. Validated in Sandwich ELISA.

Capture antibody: RHOT1 Recombinant antibody, PBS Only (Capture) 84055-7-PBS (241157A9). 100 µg. Concentration 1 mg/ml.

Detection antibody: RHOT1 Recombinant antibody, PBS Only (Detector) 84055-6-PBS (241157F10). 100 µg. Concentration 1 mg/ml.

Alternative MIRO1 matched antibody pairs: MP01000-1, MP01000-2, MP01000-3

Unconjugated rabbit recombinant monoclonal antibody pair in PBS only storage buffer at a concentration of 1 mg/mL, ready for conjugation. Created using Proteintech's proprietary in-house recombinant technology. Recombinant production enables unrivalled batch-to-batch consistency, easy scale-up, and future security of supply.

Matched antibody pairs are designed for use in a variety of assays and platforms that require matched antibody pairs.

Antibody use should be optimized for each application and assay.

Storage

Storage:
Store at -80°C.
Storage buffer:
PBS only

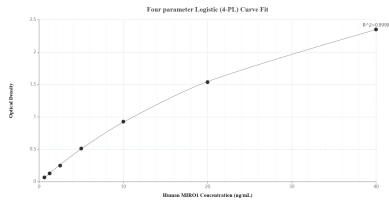
For technical support and original validation data for this product please contact:

T: 1 (888) 4PTGLAB (1-888-478-4522) (toll free in USA), or 1(312) 455-8498 (outside USA)

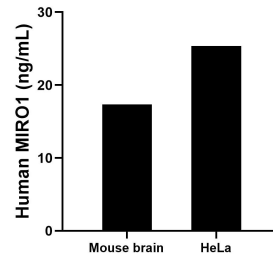
E: proteintech@ptglab.com
W: ptglab.com

This product is exclusively available under Proteintech Group brand and is not available to purchase from any other manufacturer.

Selected Validation Data



Sandwich ELISA standard curve of MP01000-4, Human MIRO1 Recombinant Matched Antibody Pair - PBS only. 84055-7-PBS was coated to a plate as the capture antibody and incubated with serial dilutions of standard Ag15605. 84055-6-PBS was HRP conjugated as the detection antibody. Range: 0.625-40 ng/mL.



The mean MIRO1 concentration was determined to be 17.32 ng/mL in mouse brain cell extract based on a 4.60 mg/mL extract load and 25.35 ng/mL in HeLa cell extract based on a 4.60 mg/mL extract load.