

For Research Use Only



# TRP1 Recombinant Matched Antibody Pair, PBS Only

Catalog Number:MP00997-3

## Capture Antibody Information

Catalog Number:  
84082-4-PBS

Host:  
Rabbit

Isotype:  
IgG

Purification Method:  
Protein A purification

Clone ID:  
241242C2

Reactivity:  
human

Immunogen Catalog Number:  
Ag10166

Conjugate:  
Unconjugated

Full name:  
tyrosinase-related protein 1

Gene ID:  
7306

## Detection Antibody Information

Catalog Number:  
84082-2-PBS

Host:  
Rabbit

Isotype:  
IgG

Purification Method:  
Protein A purification

Clone ID:  
241242D7

Reactivity:  
human

GenBank:  
BC052608

Immunogen Catalog Number:  
Ag10166

Conjugate:  
Unconjugated

Full name:  
tyrosinase-related protein 1

Gene ID:  
7306

## Applications

Tested Applications:  
Sandwich ELISA

Range:  
1.56-100 ng/mL (Sandwich ELISA)

Recommended Dilutions:  
It is recommended that this reagent should be titrated in each testing system to obtain optimal results.

## Product Information

MP00997-3 targets TRP1 in immunoassays as a matched antibody pair. Validated in Sandwich ELISA.

Capture antibody: TRP1 Recombinant antibody, PBS Only (Capture) 84082-4-PBS (241242C2). 100 µg. Concentration 1 mg/mL.

Detection antibody: TRP1 Recombinant antibody, PBS Only (Detector) 84082-2-PBS (241242D7). 100 µg. Concentration 1 mg/mL.

Alternative TRP1 matched antibody pairs: MP00997-1, MP00997-2

Unconjugated rabbit recombinant monoclonal antibody pair in PBS only storage buffer at a concentration of 1 mg/mL, ready for conjugation. Created using Proteintech's proprietary in-house recombinant technology. Recombinant production enables unrivalled batch-to-batch consistency, easy scale-up, and future security of supply.

Matched antibody pairs are designed for use in a variety of assays and platforms that require matched antibody pairs.

Antibody use should be optimized for each application and assay.

## Storage

Storage:  
Store at -80°C.  
Storage buffer:  
PBS only

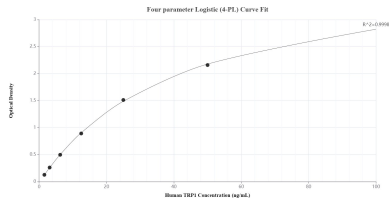
For technical support and original validation data for this product please contact:

T: 1 (888) 4PTGLAB (1-888-478-4522) (toll free in USA), or 1(312) 455-8498 (outside USA)

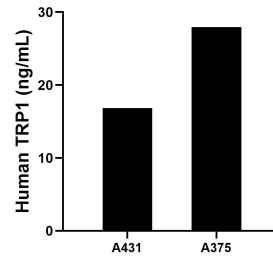
E: proteintech@ptglab.com  
W: ptglab.com

This product is exclusively available under Proteintech Group brand and is not available to purchase from any other manufacturer.

## Selected Validation Data



Sandwich ELISA standard curve of MP00997-3, Human TRP1 Recombinant Matched Antibody Pair - PBS only. 84082-4-PBS was coated to a plate as the capture antibody and incubated with serial dilutions of standard Ag10166. 84082-2-PBS was HRP conjugated as the detection antibody. Range: 1.56-100 ng/mL.



The mean TRP1 concentration was determined to be 16.83 ng/mL in A431 cell extract based on a 4.00 mg/mL extract load and 27.93 ng/mL in A375 cell extract based on a 4.60 mg/mL extract load.