

For Research Use Only

CD36 Recombinant Matched Antibody Pair, PBS Only



Catalog Number:MP00992-4

Capture Antibody Information

Catalog Number:
84078-3-PBS
Host:
Rabbit
Isotype:
IgG
Purification Method:
Protein A purification

Clone ID:
241262F8
Reactivity:
human

Conjugate:
Unconjugated
Full name:
CD36 molecule (thrombospondin receptor)
Gene ID:
948

Detection Antibody Information

Catalog Number:
84078-5-PBS
Host:
Rabbit
Isotype:
IgG
Purification Method:
Protein A purification

Clone ID:
241262C5
Reactivity:
human
GenBank:
NM_001001548.3

Conjugate:
Unconjugated
Full name:
CD36 molecule (thrombospondin receptor)
Gene ID:
948

Applications

Tested Applications:
Sandwich ELISA

Range:
7.81-250 ng/mL (Sandwich ELISA)

Recommended Dilutions:
It is recommended that this reagent should be titrated in each testing system to obtain optimal results.

Product Information

MP00992-4 targets CD36 in immunoassays as a matched antibody pair. Validated in Sandwich ELISA.

Capture antibody: CD36 Recombinant antibody, PBS Only (Capture/Detector) 84078-3-PBS (241262F8). 100 µg. Concentration 1 mg/ml.

Detection antibody: CD36 Recombinant antibody, PBS Only (Detector) 84078-5-PBS (241262C5). 100 µg. Concentration 1 mg/ml.

Alternative CD36 matched antibody pairs: MP00992-1, MP00992-2, MP00992-3

Unconjugated rabbit recombinant monoclonal antibody pair in PBS only storage buffer at a concentration of 1 mg/mL, ready for conjugation. Created using Proteintech's proprietary in-house recombinant technology. Recombinant production enables unrivalled batch-to-batch consistency, easy scale-up, and future security of supply.

Matched antibody pairs are designed for use in a variety of assays and platforms that require matched antibody pairs.

Antibody use should be optimized for each application and assay.

Storage

Storage:
Store at -80°C.
Storage buffer:
PBS only

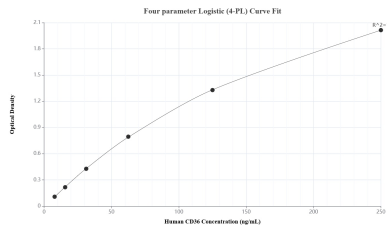
For technical support and original validation data for this product please contact:

T: 1 (888) 4PTGLAB (1-888-478-4522) (toll free in USA), or 1(312) 455-8498 (outside USA)

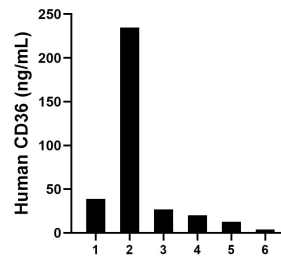
E: proteintech@ptglab.com
W: ptglab.com

This product is exclusively available under Proteintech Group brand and is not available to purchase from any other manufacturer.

Selected Validation Data



Sandwich ELISA standard curve of MP00992-4, Human CD36 Recombinant Matched Antibody Pair - PBS only. 84078-3-PBS was coated to a plate as the capture antibody and incubated with serial dilutions of standard Eg1070. 84078-5-PBS was HRP conjugated as the detection antibody. Range: 7.81-250 ng/mL.



Serum of six individual healthy human donors was measured. The CD36 concentration of detected samples was determined to be 80.10 ng/mL with a range of 3.74-234.72 ng/mL.