

For Research Use Only



Mouse CD138/Syndecan-1 Recombinant Matched Antibody Pair, PBS Only

Catalog Number:MP00990-2

Capture Antibody Information

Catalog Number:
84069-3-PBS

Host:
Rabbit

Isotype:
IgG

Purification Method:
Protein A purification

Clone ID:
241278E7

Reactivity:
mouse

Conjugate:
Unconjugated

Full name:
syndecan 1

Gene ID:
20969

Detection Antibody Information

Catalog Number:
84069-1-PBS

Host:
Rabbit

Isotype:
IgG

Purification Method:
Protein A purification

Clone ID:
241278C7

Reactivity:
mouse

GenBank:
NM_011519.2

Conjugate:
Unconjugated

Full name:
syndecan 1

Gene ID:
20969

Applications

Tested Applications:
Cytometric bead array, Sandwich
ELISA

Range:
0.625-80 ng/mL (Cytometric Bead
Array)
0.625-40 ng/mL (Sandwich ELISA)

Recommended Dilutions:
It is recommended that this reagent
should be titrated in each testing
system to obtain optimal results.

Product Information

MP00990-2 targets CD138/Syndecan-1 in immunoassays as a matched antibody pair. Validated in Cytometric bead array, Sandwich ELISA.

Capture antibody: Mouse CD138/Syndecan-1 Recombinant antibody, PBS Only (Capture) 84069-3-PBS (241278E7). 100 µg. Concentration 1 mg/ml.

Detection antibody: Mouse CD138/Syndecan-1 Recombinant antibody, PBS Only (Detector) 84069-1-PBS (241278C7). 100 µg. Concentration 1 mg/ml.

Alternative CD138/Syndecan-1 matched antibody pairs: MP00527-1, MP00527-2, MP00527-3, MP00990-1, MP00990-3, MP50044-1

Unconjugated rabbit recombinant monoclonal antibody pair in PBS only storage buffer at a concentration of 1 mg/mL, ready for conjugation. Created using Proteintech's proprietary in-house recombinant technology. Recombinant production enables unrivalled batch-to-batch consistency, easy scale-up, and future security of supply.

Matched antibody pairs are designed for use in a variety of assays and platforms that require matched antibody pairs.

Antibody use should be optimized for each application and assay.

Storage

Storage:
Store at -80°C.
Storage buffer:
PBS only

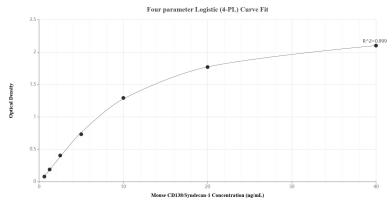
For technical support and original validation data for this product please contact:

T: 1 (888) 4PTGLAB (1-888-478-4522) (toll free
in USA), or 1(312) 455-8498 (outside USA)

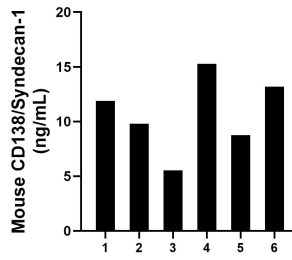
E: proteintech@ptglab.com
W: ptglab.com

This product is exclusively available under Proteintech Group brand and is not available to purchase from any other manufacturer.

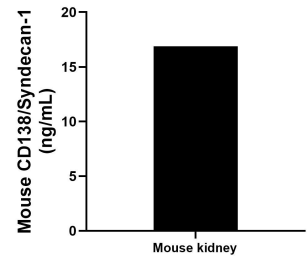
Selected Validation Data



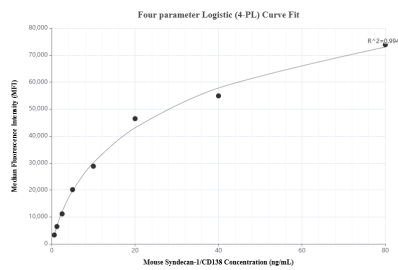
Sandwich ELISA standard curve of MP00990-2, Mouse CD138/Syndecan-1 Recombinant Matched Antibody Pair - PBS only. 84069-3-PBS was coated to a plate as the capture antibody and incubated with serial dilutions of standard Eg1221. 84069-1-PBS was HRP conjugated as the detection antibody. Range: 0.625-40 ng/mL



Serum of six mice was measured. The CD138/Syndecan-1 concentration of detected samples was determined to be 10.74 ng/mL with a range of 5.54-15.27 ng/mL



The mean CD138/Syndecan-1 concentration was determined to be 16.88 ng/mL in mouse kidney cell extract based on a 3.10 mg/mL extract load.



Cytometric bead array standard curve of MP00990-2, MOUSE CD138/Syndecan-1 Recombinant Matched Antibody Pair, PBS Only. Capture antibody: 84069-3-PBS. Detection antibody: 84069-1-PBS. Standard: Eg1221. Range: 0.625-80 ng/mL