

For Research Use Only

Clusterin Recombinant Matched Antibody Pair, PBS Only



Catalog Number:MP00986-3

Capture Antibody Information

Catalog Number:

84067-1-PBS

Host:

Rabbit

Isotype:

IgG

Purification Method:

Protein A purification

Clone ID:

241277A4

Reactivity:

human

Conjugate:

Unconjugated

Full name:

clusterin

Gene ID:

1191

Detection Antibody Information

Catalog Number:

84067-3-PBS

Host:

Rabbit

Isotype:

IgG

Purification Method:

Protein A purification

Clone ID:

241277H2

Reactivity:

human

GenBank:

BC010514

Conjugate:

Unconjugated

Full name:

clusterin

Gene ID:

1191

Applications

Tested Applications:

Sandwich ELISA

Range:

97.7-6250 pg/mL (Sandwich ELISA)

Recommended Dilutions:

It is recommended that this reagent should be titrated in each testing system to obtain optimal results.

Product Information

MP00986-3 targets Clusterin in immunoassays as a matched antibody pair. Validated in Sandwich ELISA.

Capture antibody: Clusterin Recombinant antibody, PBS Only (Capture) 84067-1-PBS (241277A4). 100 µg. Concentration 1 mg/ml.

Detection antibody: Clusterin Recombinant antibody, PBS Only (Detector) 84067-3-PBS (241277H2). 100 µg. Concentration 1 mg/ml.

Unconjugated rabbit recombinant monoclonal antibody pair in PBS only storage buffer at a concentration of 1 mg/mL, ready for conjugation. Created using Proteintech's proprietary in-house recombinant technology. Recombinant production enables unrivalled batch-to-batch consistency, easy scale-up, and future security of supply.

Matched antibody pairs are designed for use in a variety of assays and platforms that require matched antibody pairs.

Antibody use should be optimized for each application and assay.

Storage

Storage:

Store at -80°C.

Storage buffer:

PBS only

For technical support and original validation data for this product please contact:

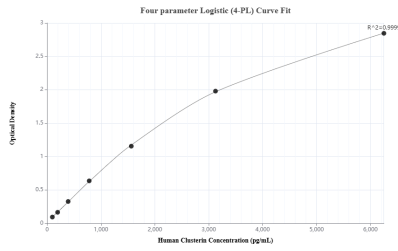
T: 1 (888) 4PTGLAB (1-888-478-4522) (toll free in USA), or 1(312) 455-8498 (outside USA)

E: proteintech@ptglab.com

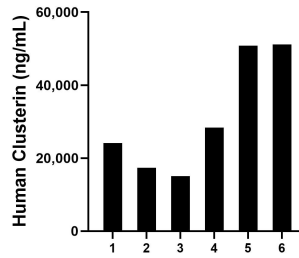
W: ptglab.com

This product is exclusively available under Proteintech Group brand and is not available to purchase from any other manufacturer.

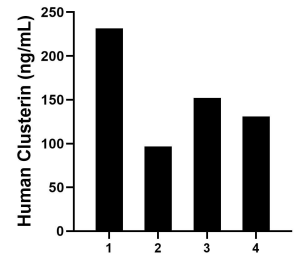
Selected Validation Data



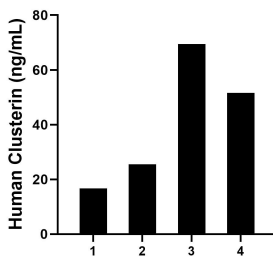
Sandwich ELISA standard curve of MP00986-3, Human Clusterin Recombinant Matched Antibody Pair - PBS only. 84067-1-PBS was coated to a plate as the capture antibody and incubated with serial dilutions of standard Ego225. 84067-3-PBS was HRP conjugated as the detection antibody. Range: 97.7-6250 pg/mL



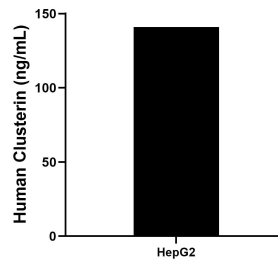
Serum of six individual healthy human donors was measured. The human Clusterin concentration of detected samples was determined to be 31,152.14 ng/mL with a range of 15,052.59 - 51,157.85 ng/mL



Saliva of four individual healthy human donors was measured. The human Clusterin concentration of detected samples was determined to be 152.81 ng/mL with a range of 95.56 - 231.47 ng/mL



Urine of four individual healthy human donors was measured. The human Clusterin concentration of detected samples was determined to be 40.81 ng/mL with a range of 16.72 - 69.41 ng/mL



HepG2 were cultured in DMEM supplemented with 10% fetal bovine serum, 2.5 mM L-glutamine, 100 U/mL penicillin, and 100 µg/mL streptomycin sulfate. An aliquot of the cell culture supernate was removed, assayed for human Clusterin, and measured 140.90 ng/mL