

For Research Use Only

KLK3/PSA Recombinant Matched Antibody Pair, PBS Only



Catalog Number:MP00975-3

Capture Antibody Information

Catalog Number:
84059-9-PBS

Host:
Rabbit

Isotype:
IgG

Purification Method:
Protein A purification

Clone ID:
241223D6

Reactivity:
human

Conjugate:
Unconjugated

Full name:
kallikrein-related peptidase 3

Gene ID:
354

Detection Antibody Information

Catalog Number:
84059-4-PBS

Host:
Rabbit

Isotype:
IgG

Purification Method:
Protein A purification

Clone ID:
241223H3

Reactivity:
human

GenBank:
NM_001648.2

Conjugate:
Unconjugated

Full name:
kallikrein-related peptidase 3

Gene ID:
354

Applications

Tested Applications:
Sandwich ELISA

Range:
9.38-600 pg/mL (Sandwich ELISA)

Recommended Dilutions:
It is recommended that this reagent should be titrated in each testing system to obtain optimal results.

Product Information

MP00975-3 targets KLK3/PSA in immunoassays as a matched antibody pair. Validated in Sandwich ELISA.

Capture antibody: KLK3/PSA Recombinant antibody, PBS Only (Capture) 84059-9-PBS (241223D6). 100 µg. Concentration 1 mg/ml.

Detection antibody: KLK3/PSA Recombinant antibody, PBS Only (Capture/Detector) 84059-4-PBS (241223H3). 100 µg. Concentration 1 mg/ml.

Unconjugated rabbit recombinant monoclonal antibody pair in PBS only storage buffer at a concentration of 1 mg/mL, ready for conjugation. Created using Proteintech's proprietary in-house recombinant technology. Recombinant production enables unrivalled batch-to-batch consistency, easy scale-up, and future security of supply.

Matched antibody pairs are designed for use in a variety of assays and platforms that require matched antibody pairs.

Antibody use should be optimized for each application and assay.

Storage

Storage:
Store at -80°C.
Storage buffer:
PBS only

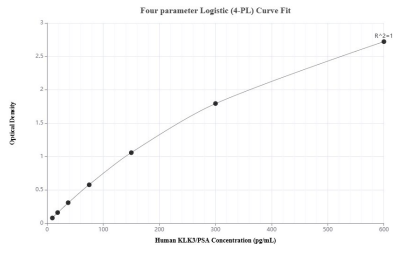
For technical support and original validation data for this product please contact:

T: 1 (888) 4PTGLAB (1-888-478-4522) (toll free in USA), or 1(312) 455-8498 (outside USA)

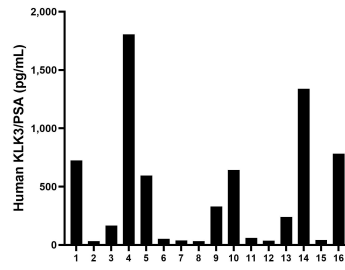
E: proteintech@ptglab.com
W: ptglab.com

This product is exclusively available under Proteintech Group brand and is not available to purchase from any other manufacturer.

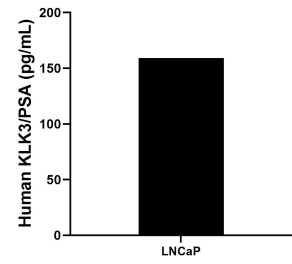
Selected Validation Data



Sandwich ELISA standard curve of MP00975-3, Human KLK3/PSA Recombinant Matched Antibody Pair - PBS only. 84059-9-PBS was coated to a plate as the capture antibody and incubated with serial dilutions of standard Eg0869. 84059-4-PBS was HRP conjugated as the detection antibody. Range: 9.38-600 pg/mL



Serum of sixteen individual healthy human donors was measured. The human KLK3/PSA concentration of detected samples was determined to be 432.7 pg/mL with a range of 32.3 - 1804.8 pg/mL



LNCaP human prostate cancer cells were cultured in RPMI supplemented with 10% fetal bovine serum, 10 mM HEPES and 1 mM sodium pyruvate. An aliquot of the cell culture supernate was removed, assayed for human KLK3/PSA, and measured 159.3 pg/mL