

For Research Use Only

RNF40 Recombinant Matched Antibody Pair, PBS Only



Catalog Number:MP00974-1

Capture Antibody Information

Catalog Number:
84058-1-PBS

Host:
Rabbit

Isotype:
IgG

Purification Method:
Protein A purification

Clone ID:
241214C3

Reactivity:
human

Immunogen Catalog Number:
Ag8047

Conjugate:
Unconjugated

Full name:
ring finger protein 40

Gene ID:
9810

Detection Antibody Information

Catalog Number:
84058-3-PBS

Host:
Rabbit

Isotype:
IgG

Purification Method:
Protein A purification

Clone ID:
241214E10

Reactivity:
human

GenBank:
BC006133

Immunogen Catalog Number:
Ag8047

Conjugate:
Unconjugated

Full name:
ring finger protein 40

Gene ID:
9810

Applications

Tested Applications:
Cytometric bead array, Sandwich ELISA

Range:
0.156-20 ng/mL (Cytometric Bead Array)
31.3-2000 pg/mL (Sandwich ELISA)

Recommended Dilutions:
It is recommended that this reagent should be titrated in each testing system to obtain optimal results.

Product Information

MP00974-1 targets RNF40 in immunoassays as a matched antibody pair. Validated in Cytometric bead array, Sandwich ELISA.

Capture antibody: RNF40 Recombinant antibody, PBS Only (Capture) 84058-1-PBS (241214C3). 100 µg. Concentration 1 mg/mL.

Detection antibody: RNF40 Recombinant antibody, PBS Only (Detector) 84058-3-PBS (241214E10). 100 µg. Concentration 1 mg/mL.

Alternative RNF40 matched antibody pairs: MP00974-2

Unconjugated rabbit recombinant monoclonal antibody pair in PBS only storage buffer at a concentration of 1 mg/mL, ready for conjugation. Created using Proteintech's proprietary in-house recombinant technology. Recombinant production enables unrivalled batch-to-batch consistency, easy scale-up, and future security of supply.

Matched antibody pairs are designed for use in a variety of assays and platforms that require matched antibody pairs.

Antibody use should be optimized for each application and assay.

Storage

Storage:
Store at -80°C.
Storage buffer:
PBS only

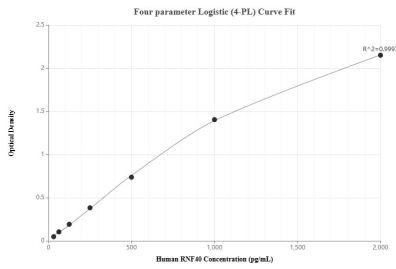
For technical support and original validation data for this product please contact:

T: 1 (888) 4PTGLAB (1-888-478-4522) (toll free in USA), or 1(312) 455-8498 (outside USA)

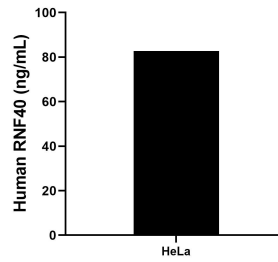
E: proteintech@ptglab.com
W: ptglab.com

This product is exclusively available under Proteintech Group brand and is not available to purchase from any other manufacturer.

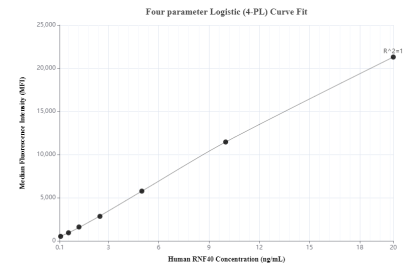
Selected Validation Data



Sandwich ELISA standard curve of MP00974-1, Human RNF40 Recombinant Matched Antibody Pair - PBS only. 84058-1-PBS was coated to a plate as the capture antibody and incubated with serial dilutions of standard Ag8047. 84058-3-PBS was HRP conjugated as the detection antibody. Range: 31.3-2000 pg/mL



The mean RNF40 concentration was determined to be 82.72 ng/mL in HeLa cell extract based on a 2.0 mg/mL extract load.



Cytometric bead array standard curve of MP00974-1, RNF40 Recombinant Matched Antibody Pair, PBS Only. Capture antibody: 84058-1-PBS. Detection antibody: 84058-3-PBS. Standard: Ag8047. Range: 0.156-20 ng/mL