

For Research Use Only

# ABCC3 Recombinant Matched Antibody Pair, PBS Only



Catalog Number:MP00973-2

## Capture Antibody Information

Catalog Number:  
84057-1-PBS

Host:  
Rabbit

Isotype:  
IgG

Purification Method:  
Protein A purification

Clone ID:  
241209B9

Reactivity:  
human

Immunogen Catalog Number:  
Ag19786

Conjugate:  
Unconjugated

Full name:  
ATP-binding cassette, sub-family C (CFTR/MRP), member 3

Gene ID:  
8714

## Detection Antibody Information

Catalog Number:  
84057-3-PBS

Host:  
Rabbit

Isotype:  
IgG

Purification Method:  
Protein A purification

Clone ID:  
241209D1

Reactivity:  
human

GenBank:  
BC137348

Immunogen Catalog Number:  
Ag19786

Conjugate:  
Unconjugated

Full name:  
ATP-binding cassette, sub-family C (CFTR/MRP), member 3

Gene ID:  
8714

## Applications

Tested Applications:  
Sandwich ELISA

Range:  
78.1-5000 pg/mL (Sandwich ELISA)

Recommended Dilutions:  
It is recommended that this reagent should be titrated in each testing system to obtain optimal results.

## Product Information

MP00973-2 targets ABCC3 in immunoassays as a matched antibody pair. Validated in Sandwich ELISA.

Capture antibody: MRP3/ABCC3 Recombinant antibody, PBS Only (Capture) 84057-1-PBS (241209B9). 100 µg. Concentration 1 mg/ml.

Detection antibody: ABCC3 Recombinant antibody, PBS Only (Detector) 84057-3-PBS (241209D1). 100 µg. Concentration 1 mg/ml.

Alternative ABCC3 matched antibody pairs: MP00973-1, MP50255-1

Unconjugated rabbit recombinant monoclonal antibody pair in PBS only storage buffer at a concentration of 1 mg/mL, ready for conjugation. Created using Proteintech's proprietary in-house recombinant technology. Recombinant production enables unrivalled batch-to-batch consistency, easy scale-up, and future security of supply.

Matched antibody pairs are designed for use in a variety of assays and platforms that require matched antibody pairs.

Antibody use should be optimized for each application and assay.

## Storage

Storage:  
Store at -80°C.  
Storage buffer:  
PBS only

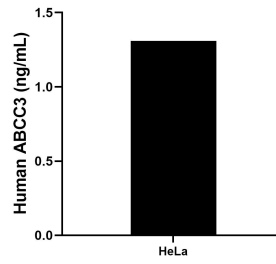
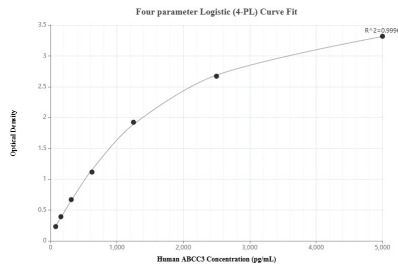
For technical support and original validation data for this product please contact:

T: 1 (888) 4PTGLAB (1-888-478-4522) (toll free in USA), or 1(312) 455-8498 (outside USA)

E: [proteintech@ptglab.com](mailto:proteintech@ptglab.com)  
W: [ptglab.com](http://ptglab.com)

This product is exclusively available under Proteintech Group brand and is not available to purchase from any other manufacturer.

## Selected Validation Data



Sandwich ELISA standard curve of MP00973-2, Human ABCC3 Recombinant Matched Antibody Pair - PBS only. 84057-1-PBS was coated to a plate as the capture antibody and incubated with serial dilutions of standard Ag19786. 84057-3-PBS was HRP conjugated as the detection antibody. Range: 78.1-5000 pg/mL

The mean ABCC3 concentration was determined to be 1.31 ng/mL in HeLa cell extract based on a 2.0 mg/mL extract load.