

For Research Use Only

PARP14 Recombinant Matched Antibody Pair, PBS Only



Catalog Number:MP00966-3

Capture Antibody Information

Catalog Number:
84039-5-PBS

Host:
Rabbit

Isotype:
IgG

Purification Method:
Protein A purification

Clone ID:
241078G10

Reactivity:
human

Immunogen Catalog Number:
Ag35007

Conjugate:
Unconjugated

Full name:
poly (ADP-ribose) polymerase family,
member 14

Gene ID:
54625

Detection Antibody Information

Catalog Number:
84039-1-PBS

Host:
Rabbit

Isotype:
IgG

Purification Method:
Protein A purification

Clone ID:
241078B2

Reactivity:
human

GenBank:
NM_017554

Immunogen Catalog Number:
Ag35007

Conjugate:
Unconjugated

Full name:
poly (ADP-ribose) polymerase family,
member 14

Gene ID:
54625

Applications

Tested Applications:
Sandwich ELISA

Range:
1.56-100 ng/mL (Sandwich ELISA)

Recommended Dilutions:
It is recommended that this reagent
should be titrated in each testing
system to obtain optimal results.

Product Information

MP00966-3 targets PARP14 in immunoassays as a matched antibody pair. Validated in Sandwich ELISA.

Capture antibody: PARP14 Recombinant antibody, PBS Only (Capture) 84039-5-PBS (241078G10). 100 µg. Concentration 1 mg/ml.

Detection antibody: PARP14 Recombinant antibody, PBS Only (Detector) 84039-1-PBS (241078B2). 100 µg. Concentration 1 mg/ml.

Unconjugated rabbit recombinant monoclonal antibody pair in PBS only storage buffer at a concentration of 1 mg/mL, ready for conjugation. Created using Proteintech's proprietary in-house recombinant technology. Recombinant production enables unrivalled batch-to-batch consistency, easy scale-up, and future security of supply.

Matched antibody pairs are designed for use in a variety of assays and platforms that require matched antibody pairs.

Antibody use should be optimized for each application and assay.

Storage

Storage:
Store at -80°C.
Storage buffer:
PBS only

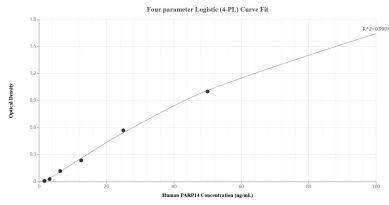
For technical support and original validation data for this product please contact:

T: 1 (888) 4PTGLAB (1-888-478-4522) (toll free
in USA), or 1(312) 455-8498 (outside USA)

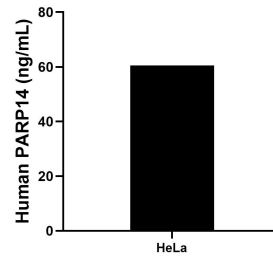
E: proteintech@ptglab.com
W: ptglab.com

This product is exclusively available under Proteintech Group brand and is not available to purchase from any other manufacturer.

Selected Validation Data



Sandwich ELISA standard curve of MP00966-3, Human PARP14 Recombinant Matched Antibody Pair - PBS only. 84039-5-PBS was coated to a plate as the capture antibody and incubated with serial dilutions of standard Ag35007. 84039-1-PBS was HRP conjugated as the detection antibody. Range: 1.56-100 ng/mL.



The mean PARP14 concentration was determined to be 60.54 ng/mL in HeLa cell extract based on a 1.00 mg/mL extract load.