

For Research Use Only

SP100 Recombinant Matched Antibody Pair, PBS Only



Catalog Number:MP00964-2

Capture Antibody Information

Catalog Number:
84012-3-PBS

Host:
Rabbit

Isotype:
IgG

Purification Method:
Protein A purification

Clone ID:
241153E8

Reactivity:
human

Immunogen Catalog Number:
Ag35193

Conjugate:
Unconjugated

Full name:
SP100 nuclear antigen

Gene ID:
6672

Detection Antibody Information

Catalog Number:
84012-2-PBS

Host:
Rabbit

Isotype:
IgG

Purification Method:
Protein A purification

Clone ID:
241153D11

Reactivity:
human

GenBank:
BC011562

Immunogen Catalog Number:
Ag35193

Conjugate:
Unconjugated

Full name:
SP100 nuclear antigen

Gene ID:
6672

Applications

Tested Applications:
Cytometric bead array

Range:
0.156-10 ng/mL (Cytometric Bead Array)

Recommended Dilutions:
It is recommended that this reagent should be titrated in each testing system to obtain optimal results.

Product Information

MP00964-2 targets SP100 in immunoassays as a matched antibody pair. Validated in Cytometric bead array.

Capture antibody: SP100 Recombinant antibody, PBS Only (Capture) 84012-3-PBS (241153E8). 100 µg. Concentration 1 mg/mL.

Detection antibody: SP100 Recombinant antibody, PBS Only (Capture/Detector) 84012-2-PBS (241153D11). 100 µg. Concentration 1 mg/mL.

Alternative SP100 matched antibody pairs: MP00964-1, MP00964-3, MP00964-4

Unconjugated rabbit recombinant monoclonal antibody pair in PBS only storage buffer at a concentration of 1 mg/mL, ready for conjugation. Created using Proteintech's proprietary in-house recombinant technology. Recombinant production enables unrivalled batch-to-batch consistency, easy scale-up, and future security of supply.

Matched antibody pairs are designed for use in a variety of assays and platforms that require matched antibody pairs.

Antibody use should be optimized for each application and assay.

Storage

Storage:
Store at -80°C.
Storage buffer:
PBS only

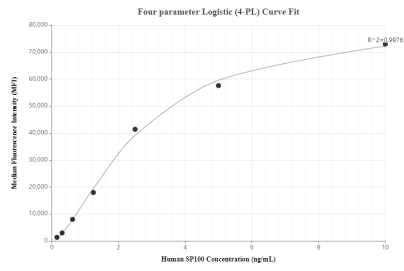
For technical support and original validation data for this product please contact:

T: 1 (888) 4PTGLAB (1-888-478-4522) (toll free in USA), or 1(312) 455-8498 (outside USA)

E: proteintech@ptglab.com
W: ptglab.com

This product is exclusively available under Proteintech Group brand and is not available to purchase from any other manufacturer.

Selected Validation Data



Cytometric bead array standard curve of MP00964-2, SP100 Recombinant Matched Antibody Pair, PBS Only. Capture antibody: 84012-3-PBS. Detection antibody: 84012-2-PBS. Standard: Ag35193. Range: 0.156-10 ng/mL