

For Research Use Only

# CD23 Recombinant Matched Antibody Pair, PBS Only



Catalog Number:MP00958-3

## Capture Antibody Information

**Catalog Number:**  
84024-3-PBS

**Host:**  
Rabbit

**Isotype:**  
IgG

**Purification Method:**  
Protein A purification

**Clone ID:**  
241269C8

**Reactivity:**  
human

**Conjugate:**  
Unconjugated

**Full name:**  
Fc fragment of IgE, low affinity II, receptor for (CD23)

**Gene ID:**  
2208

## Detection Antibody Information

**Catalog Number:**  
84024-1-PBS

**Host:**  
Rabbit

**Isotype:**  
IgG

**Purification Method:**  
Protein A purification

**Clone ID:**  
241269B5

**Reactivity:**  
human

**GenBank:**  
BC064417

**Conjugate:**  
Unconjugated

**Full name:**  
Fc fragment of IgE, low affinity II, receptor for (CD23)

**Gene ID:**  
2208

## Applications

**Tested Applications:**  
Sandwich ELISA

**Range:**  
7.81-500 pg/mL (Sandwich ELISA)

**Recommended Dilutions:**  
It is recommended that this reagent should be titrated in each testing system to obtain optimal results.

## Product Information

MP00958-3 targets CD23 in immunoassays as a matched antibody pair. Validated in Sandwich ELISA.

Capture antibody: CD23 Recombinant antibody, PBS Only (Capture/Detector) 84024-3-PBS (241269C8). 100 µg. Concentration 1 mg/ml.

Detection antibody: CD23 Recombinant antibody, PBS Only (Capture/Detector) 84024-1-PBS (241269B5). 100 µg. Concentration 1 mg/ml.

Alternative CD23 matched antibody pairs: MP00958-1, MP00958-2

Unconjugated rabbit recombinant monoclonal antibody pair in PBS only storage buffer at a concentration of 1 mg/mL, ready for conjugation. Created using Proteintech's proprietary in-house recombinant technology. Recombinant production enables unrivalled batch-to-batch consistency, easy scale-up, and future security of supply.

Matched antibody pairs are designed for use in a variety of assays and platforms that require matched antibody pairs.

Antibody use should be optimized for each application and assay.

## Storage

**Storage:**  
Store at -80°C.  
**Storage buffer:**  
PBS only

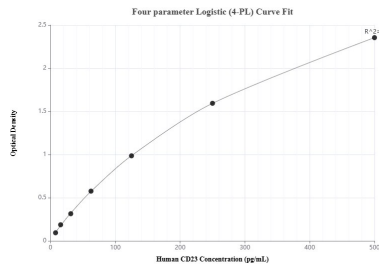
For technical support and original validation data for this product please contact:

T: 1 (888) 4PTGLAB (1-888-478-4522) (toll free in USA), or 1(312) 455-8498 (outside USA)

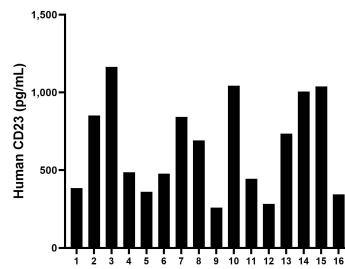
E: [proteintech@ptglab.com](mailto:proteintech@ptglab.com)  
W: [ptglab.com](http://ptglab.com)

**This product is exclusively available under Proteintech Group brand and is not available to purchase from any other manufacturer.**

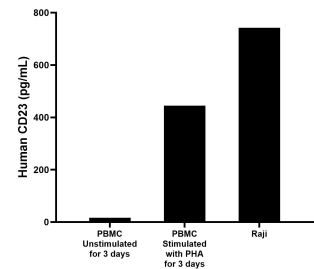
## Selected Validation Data



Sandwich ELISA standard curve of MP00958-3, Human CD23 Recombinant Matched Antibody Pair - PBS only. 84024-3-PBS was coated to a plate as the capture antibody and incubated with serial dilutions of standard RPO2343. 84024-1-PBS was HRP conjugated as the detection antibody. Range: 7.81-500 pg/mL



Serum of sixteen individual healthy human donors was measured. The human CD23 concentration of detected samples was determined to be 651.0 pg/mL with a range of 259.5 - 1,165.0 pg/mL.



Human peripheral blood mononuclear cells (PBMC) were cultured unstimulated or stimulated with 10 µg/mL PHA for 3 days. The mean CD23 concentration was determined to be 16.3 pg/mL in unstimulated PBMC supernatant, 444.73 pg/mL in PHA stimulated PBMC supernatant. Raji human Burkitt's lymphoma cells were cultured in RPMI supplemented with 10% fetal bovine serum, 2mM L-glutamine, 100 U/mL penicillin, and 100 µg/mL streptomycin sulfate. The mean