

PEG3 Recombinant Matched Antibody Pair, PBS Only

Catalog Number:MP00940-1

Capture Antibody Information

Catalog Number:
84030-2-PBS

Host:
Rabbit

Isotype:
IgG

Purification Method:
Protein A purification

Clone ID:
241234D2

Reactivity:
human

Immunogen Catalog Number:
Ag20132

Conjugate:
Unconjugated

Full name:
paternally expressed 3

Gene ID:
5178

Detection Antibody Information

Catalog Number:
84030-3-PBS

Host:
Rabbit

Isotype:
IgG

Purification Method:
Protein A purification

Clone ID:
241234F2

Reactivity:
human

GenBank:
BC150272

Immunogen Catalog Number:
Ag20132

Conjugate:
Unconjugated

Full name:
paternally expressed 3

Gene ID:
5178

Applications

Tested Applications:
Cytometric bead array, Sandwich ELISA

Range:
0.156-20 ng/mL (Cytometric Bead Array)
78.1-5000 pg/mL (Sandwich ELISA)

Recommended Dilutions:
It is recommended that this reagent should be titrated in each testing system to obtain optimal results.

Product Information

MP00940-1 targets PEG3 in immunoassays as a matched antibody pair. Validated in Cytometric bead array, Sandwich ELISA.

Capture antibody: PEG3 Recombinant antibody, PBS Only (Capture) 84030-2-PBS (241234D2). 100 µg. Concentration 1 mg/mL.

Detection antibody: PEG3 Recombinant antibody, PBS Only (Detector) 84030-3-PBS (241234F2). 100 µg. Concentration 1 mg/mL.

Alternative PEG3 matched antibody pairs: MP00940-2, MP00940-3

Unconjugated rabbit recombinant monoclonal antibody pair in PBS only storage buffer at a concentration of 1 mg/mL, ready for conjugation. Created using Proteintech's proprietary in-house recombinant technology. Recombinant production enables unrivalled batch-to-batch consistency, easy scale-up, and future security of supply.

Matched antibody pairs are designed for use in a variety of assays and platforms that require matched antibody pairs.

Antibody use should be optimized for each application and assay.

Storage

Storage:
Store at -80°C.
Storage buffer:
PBS only

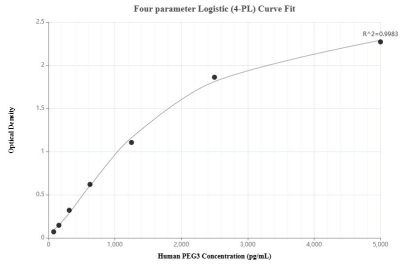
For technical support and original validation data for this product please contact:

T: 1 (888) 4PTGLAB (1-888-478-4522) (toll free in USA), or 1(312) 455-8498 (outside USA)

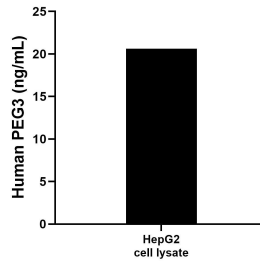
E: proteintech@ptglab.com
W: ptglab.com

This product is exclusively available under Proteintech Group brand and is not available to purchase from any other manufacturer.

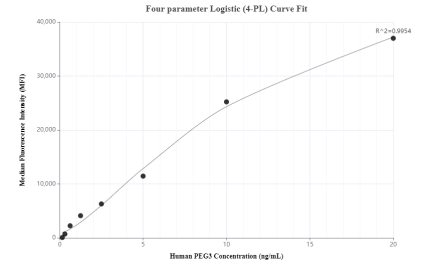
Selected Validation Data



Sandwich ELISA standard curve of MP00940-1, Human PEG3 Recombinant Matched Antibody Pair - PBS only. 84030-2-PBS was coated to a plate as the capture antibody and incubated with serial dilutions of standard Ag20132. 84030-3-PBS was HRP conjugated as the detection antibody. Range: 78.1-5000 pg/mL



HepG2 cell lysate was measured. The human PEG3 concentration of detected samples was determined to be 20.63 ng/mL (based on a 5.0 mg/mL extract load).



Cytometric bead array standard curve of MP00940-1, PEG3 Recombinant Matched Antibody Pair, PBS Only. Capture antibody: 84030-2-PBS. Detection antibody: 84030-3-PBS. Standard: Ag20132. Range: 0.156-20 ng/mL