

For Research Use Only

CXCL1 Recombinant Matched Antibody Pair, PBS Only



Catalog Number:MP00922-2

Capture Antibody Information

Catalog Number:
83937-1-PBS
Host:
Rabbit
Isotype:
IgG
Purification Method:
Protein A purification

Clone ID:
240990E5
Reactivity:
human
Immunogen Catalog Number:
Ag2917

Conjugate:
Unconjugated
Full name:
chemokine (C-X-C motif) ligand 1 (melanoma growth stimulating activity, alpha)
Gene ID:
2919

Detection Antibody Information

Catalog Number:
83937-2-PBS
Host:
Rabbit
Isotype:
IgG
Purification Method:
Protein A purification

Clone ID:
240990G2
Reactivity:
human
GenBank:
BC011976
Immunogen Catalog Number:
Ag2917

Conjugate:
Unconjugated
Full name:
chemokine (C-X-C motif) ligand 1 (melanoma growth stimulating activity, alpha)
Gene ID:
2919

Applications

Tested Applications:
Sandwich ELISA

Range:
31.25-2000 pg/mL (Sandwich ELISA)

Recommended Dilutions:
It is recommended that this reagent should be titrated in each testing system to obtain optimal results.

Product Information

MP00922-2 targets CXCL1 in immunoassays as a matched antibody pair. Validated in Sandwich ELISA.

Capture antibody: CXCL1 Recombinant antibody, PBS Only (Capture/Detector) 83937-1-PBS (240990E5). 100 µg. Concentration 1 mg/ml.

Detection antibody: CXCL1 Recombinant antibody, PBS Only (Capture/Detector) 83937-2-PBS (240990G2). 100 µg. Concentration 1 mg/ml.

Unconjugated rabbit recombinant monoclonal antibody pair in PBS only storage buffer at a concentration of 1 mg/mL, ready for conjugation. Created using Proteintech's proprietary in-house recombinant technology. Recombinant production enables unrivalled batch-to-batch consistency, easy scale-up, and future security of supply.

Matched antibody pairs are designed for use in a variety of assays and platforms that require matched antibody pairs.

Antibody use should be optimized for each application and assay.

Storage

Storage:
Store at -80°C.
Storage buffer:
PBS only

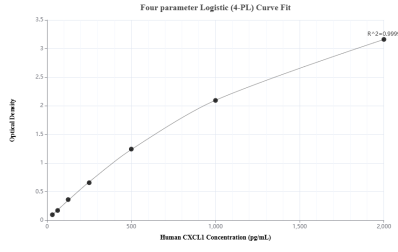
For technical support and original validation data for this product please contact:

T: 1 (888) 4PTGLAB (1-888-478-4522) (toll free in USA), or 1(312) 455-8498 (outside USA)

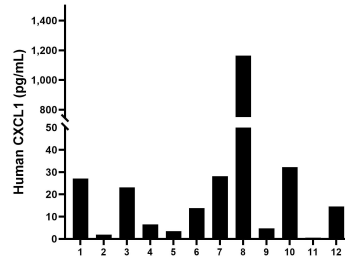
E: proteintech@ptglab.com
W: ptglab.com

This product is exclusively available under Proteintech Group brand and is not available to purchase from any other manufacturer.

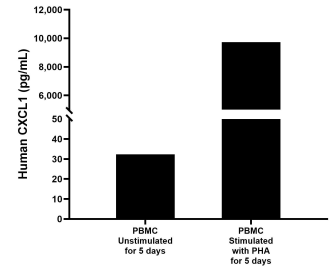
Selected Validation Data



Sandwich ELISA standard curve of MP00922-2, Human CXCL1 Recombinant Matched Antibody Pair - PBS only. 83937-1-PBS was coated to a plate as the capture antibody and incubated with serial dilutions of standard Ag2917. 83937-2-PBS was biotinylated as the detection antibody. Range: 31.25-2000 pg/mL



Serum of twelve individual healthy human donors was measured. The human CXCL1 concentration of detected samples was determined to be 110.0 pg/mL with a range of 0.6 - 1,164.0 pg/mL.



Human peripheral blood mononuclear cells (PBMC) were cultured unstimulated or stimulated with 10 µg/mL PHA for 5 days. The mean CXCL1 concentration was determined to be 32.4 pg/mL in unstimulated PBMC supernatant, 9,728.4 pg/mL in PHA stimulated PBMC supernatant.