

For Research Use Only

XBP1S Recombinant Matched Antibody Pair, PBS Only



Catalog Number:MP00917-4

Capture Antibody Information

Catalog Number:
83959-7-PBS

Host:
Rabbit

Isotype:
IgG

Purification Method:
Protein A purification

Clone ID:
241004A5

Reactivity:
human

Immunogen Catalog Number:
Ag21703

Conjugate:
Unconjugated

Full name:
X-box binding protein 1

Gene ID:
7494

Detection Antibody Information

Catalog Number:
83959-1-PBS

Host:
Rabbit

Isotype:
IgG

Purification Method:
Protein A purification

Clone ID:
241004E1

Reactivity:
human

GenBank:
BC000938

Immunogen Catalog Number:
Ag21703

Conjugate:
Unconjugated

Full name:
X-box binding protein 1

Gene ID:
7494

Applications

Tested Applications:
Sandwich ELISA

Range:
39.1-2500 pg/mL (Sandwich ELISA)

Recommended Dilutions:
It is recommended that this reagent should be titrated in each testing system to obtain optimal results.

Product Information

MP00917-4 targets XBP1S in immunoassays as a matched antibody pair. Validated in Sandwich ELISA.

Capture antibody: XBP1S-specific Recombinant antibody, PBS Only (Capture) 83959-7-PBS (241004A5). 100 µg. Concentration 1 mg/ml.

Detection antibody: XBP1S-specific Recombinant antibody, PBS Only (Detector) 83959-1-PBS (241004E1). 100 µg. Concentration 1 mg/ml.

Alternative XBP1S matched antibody pairs: MP00917-1, MP00917-2, MP00917-3

Unconjugated rabbit recombinant monoclonal antibody pair in PBS only storage buffer at a concentration of 1 mg/mL, ready for conjugation. Created using Proteintech's proprietary in-house recombinant technology. Recombinant production enables unrivalled batch-to-batch consistency, easy scale-up, and future security of supply.

Matched antibody pairs are designed for use in a variety of assays and platforms that require matched antibody pairs.

Antibody use should be optimized for each application and assay.

Storage

Storage:
Store at -80°C.
Storage buffer:
PBS only

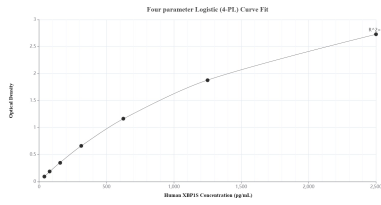
For technical support and original validation data for this product please contact:

T: 1 (888) 4PTGLAB (1-888-478-4522) (toll free in USA), or 1(312) 455-8498 (outside USA)

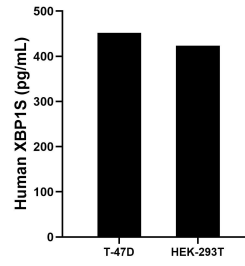
E: proteintech@ptglab.com
W: ptglab.com

This product is exclusively available under Proteintech Group brand and is not available to purchase from any other manufacturer.

Selected Validation Data



Sandwich ELISA standard curve of MP00917-4, Human XBP1S Recombinant Matched Antibody Pair - PBS only. 83959-7-PBS was coated to a plate as the capture antibody and incubated with serial dilutions of standard Ag21703. 83959-1-PBS was HRP conjugated as the detection antibody. Range: 39.1-2500 pg/mL.



The mean XBP1S concentration was determined to be 451.7 pg/mL in T-47D cell extract based on a 4.5 mg/mL extract load and 423.7 pg/mL in HEK-293T cell extract based on a 1.4 mg/mL extract load.