

For Research Use Only

PI16 Recombinant Matched Antibody Pair, PBS Only



Catalog Number:MP00888-4

Capture Antibody Information

Catalog Number:
83985-3-PBS

Host:
Rabbit

Isotype:
IgG

Purification Method:
Protein A purification

Clone ID:
241014D7

Reactivity:
human

Immunogen Catalog Number:
Ag2925

Conjugate:
Unconjugated

Full name:
peptidase inhibitor 16

Gene ID:
221476

Detection Antibody Information

Catalog Number:
83985-7-PBS

Host:
Rabbit

Isotype:
IgG

Purification Method:
Protein A purification

Clone ID:
241014F6

Reactivity:
human

GenBank:
BC022399

Immunogen Catalog Number:
Ag2925

Conjugate:
Unconjugated

Full name:
peptidase inhibitor 16

Gene ID:
221476

Applications

Tested Applications:
Sandwich ELISA

Range:
0.781-50 ng/mL (Sandwich ELISA)

Recommended Dilutions:
It is recommended that this reagent should be titrated in each testing system to obtain optimal results.

Product Information

MP00888-4 targets PI16 in immunoassays as a matched antibody pair. Validated in Sandwich ELISA.

Capture antibody: PI16 Recombinant antibody, PBS Only (Capture) 83985-3-PBS (241014D7). 100 µg. Concentration 1 mg/ml.

Detection antibody: PI16 Recombinant antibody, PBS Only (Detector) 83985-7-PBS (241014F6). 100 µg. Concentration 1 mg/ml.

Alternative PI16 matched antibody pairs: MP00888-1, MP00888-2, MP00888-3

Unconjugated rabbit recombinant monoclonal antibody pair in PBS only storage buffer at a concentration of 1 mg/mL, ready for conjugation. Created using Proteintech's proprietary in-house recombinant technology. Recombinant production enables unrivalled batch-to-batch consistency, easy scale-up, and future security of supply.

Matched antibody pairs are designed for use in a variety of assays and platforms that require matched antibody pairs.

Antibody use should be optimized for each application and assay.

Storage

Storage:
Store at -80°C.
Storage buffer:
PBS only

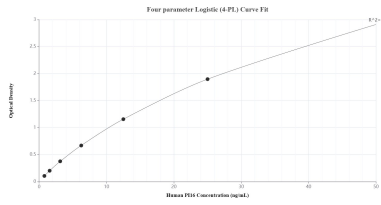
For technical support and original validation data for this product please contact:

T: 1 (888) 4PTGLAB (1-888-478-4522) (toll free in USA), or 1(312) 455-8498 (outside USA)

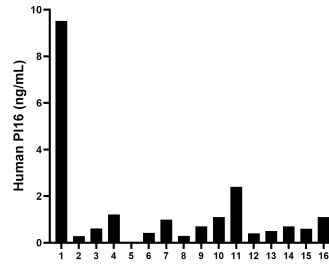
E: proteintech@ptglab.com
W: ptglab.com

This product is exclusively available under Proteintech Group brand and is not available to purchase from any other manufacturer.

Selected Validation Data



Sandwich ELISA standard curve of MP00888-4, Human PI16 Recombinant Matched Antibody Pair - PBS only. 83985-3-PBS was coated to a plate as the capture antibody and incubated with serial dilutions of standard Ag2925. 83985-7-PBS was HRP conjugated as the detection antibody. Range: 0.781-50 ng/mL



Serum of sixteen individual healthy human donors was measured. The PI16 concentration of detected samples was determined to be 1.30 ng/mL with a range of 0.01-9.52 ng/mL.