

For Research Use Only

GILZ Recombinant Matched Antibody Pair, PBS Only



Catalog Number:MP00887-3

Capture Antibody Information

Catalog Number:
83967-5-PBS

Host:
Rabbit

Isotype:
IgG

Purification Method:
Protein A purification

Clone ID:
241024D5

Reactivity:
human

Immunogen Catalog Number:
Ag3015

Conjugate:
Unconjugated

Full name:
TSC22 domain family, member 3

Gene ID:
1831

Detection Antibody Information

Catalog Number:
83967-4-PBS

Host:
Rabbit

Isotype:
IgG

Purification Method:
Protein A purification

Clone ID:
241024F5

Reactivity:
human

GenBank:
BC018148

Immunogen Catalog Number:
Ag3015

Conjugate:
Unconjugated

Full name:
TSC22 domain family, member 3

Gene ID:
1831

Applications

Tested Applications:
Sandwich ELISA

Range:
3.13-200 ng/mL (Sandwich ELISA)

Recommended Dilutions:
It is recommended that this reagent should be titrated in each testing system to obtain optimal results.

Product Information

MP00887-3 targets GILZ in immunoassays as a matched antibody pair. Validated in Sandwich ELISA.

Capture antibody: TSC22D3 Recombinant antibody, PBS Only (Capture) 83967-5-PBS (241024D5). 100 µg. Concentration 1 mg/mL.

Detection antibody: GILZ Recombinant antibody, PBS Only (Detector) 83967-4-PBS (241024F5). 100 µg. Concentration 1 mg/mL.

Unconjugated rabbit recombinant monoclonal antibody pair in PBS only storage buffer at a concentration of 1 mg/mL, ready for conjugation. Created using Proteintech's proprietary in-house recombinant technology. Recombinant production enables unrivalled batch-to-batch consistency, easy scale-up, and future security of supply.

Matched antibody pairs are designed for use in a variety of assays and platforms that require matched antibody pairs.

Antibody use should be optimized for each application and assay.

Storage

Storage:
Store at -80°C.
Storage buffer:
PBS only

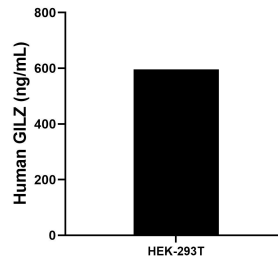
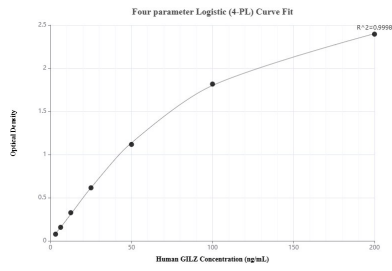
For technical support and original validation data for this product please contact:

T: 1 (888) 4PTGLAB (1-888-478-4522) (toll free in USA), or 1(312) 455-8498 (outside USA)

E: proteintech@ptglab.com
W: ptglab.com

This product is exclusively available under Proteintech Group brand and is not available to purchase from any other manufacturer.

Selected Validation Data



Sandwich ELISA standard curve of MP00887-3, Human GILZ Recombinant Matched Antibody Pair - PBS only. 83967-5-PBS was coated to a plate as the capture antibody and incubated with serial dilutions of standard Ag3015. 83967-4-PBS was HRP conjugated as the detection antibody. Range: 3.13-200 ng/mL

The mean GILZ concentration was determined to be 596.32 ng/mL in HEK-293T cell extract based on a 3.2 mg/mL extract load.