

For Research Use Only

CRMP2 Recombinant Matched Antibody Pair, PBS Only



Catalog Number:MP00886-2

Capture Antibody Information

Catalog Number:

83990-3-PBS

Host:

Rabbit

Isotype:

IgG

Purification Method:

Protein A purification

Clone ID:

241088D3

Reactivity:

human

Immunogen Catalog Number:

Ag5987

Conjugate:

Unconjugated

Full name:

dihydropyrimidinase-like 2

Gene ID:

1808

Detection Antibody Information

Catalog Number:

83990-4-PBS

Host:

Rabbit

Isotype:

IgG

Purification Method:

Protein A purification

Clone ID:

241088B5

Reactivity:

human

GenBank:

BC067109

Immunogen Catalog Number:

Ag5987

Conjugate:

Unconjugated

Full name:

dihydropyrimidinase-like 2

Gene ID:

1808

Applications

Tested Applications:

Sandwich ELISA

Range:

1.95-125 ng/mL (Sandwich ELISA)

Recommended Dilutions:

It is recommended that this reagent should be titrated in each testing system to obtain optimal results.

Product Information

MP00886-2 targets CRMP2 in immunoassays as a matched antibody pair. Validated in Sandwich ELISA.

Capture antibody: DPYSL2 Recombinant antibody, PBS Only (Capture) 83990-3-PBS (241088D3). 100 µg. Concentration 1 mg/ml.

Detection antibody: DPYSL2 Recombinant antibody, PBS Only (Detector) 83990-4-PBS (241088B5). 100 µg. Concentration 1 mg/ml.

Alternative CRMP2 matched antibody pairs: MP00886-1

Unconjugated rabbit recombinant monoclonal antibody pair in PBS only storage buffer at a concentration of 1 mg/mL, ready for conjugation. Created using Proteintech's proprietary in-house recombinant technology. Recombinant production enables unrivalled batch-to-batch consistency, easy scale-up, and future security of supply.

Matched antibody pairs are designed for use in a variety of assays and platforms that require matched antibody pairs.

Antibody use should be optimized for each application and assay.

Storage

Storage:

Store at -80°C.

Storage buffer:

PBS only

For technical support and original validation data for this product please contact:

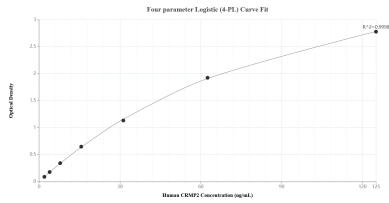
T: 1 (888) 4PTGLAB (1-888-478-4522) (toll free in USA), or 1(312) 455-8498 (outside USA)

E: proteintech@ptglab.com

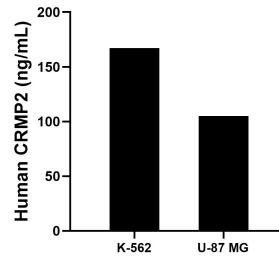
W: ptglab.com

This product is exclusively available under Proteintech Group brand and is not available to purchase from any other manufacturer.

Selected Validation Data



Sandwich ELISA standard curve of MP00886-2, Human CRMP2 Recombinant Matched Antibody Pair - PBS only. 83990-3-PBS was coated to a plate as the capture antibody and incubated with serial dilutions of standard Ag5987. 83990-4-PBS was HRP conjugated as the detection antibody. Range: 1.95-125 ng/mL.



The mean CRMP2 concentration was determined to be 167.28 ng/mL in K-562 cell extract based on a 2.10 mg/mL extract load and 105.42 ng/mL in U-87 MG cell extract based on a 3.40 mg/mL extract load.