

For Research Use Only

AGXT2L1 Recombinant Matched Antibody Pair, PBS Only



Catalog Number:MP00885-2

Capture Antibody Information

Catalog Number:
83984-2-PBS

Host:
Rabbit

Isotype:
IgG

Purification Method:
Protein A purification

Clone ID:
241119C5

Reactivity:
human

Immunogen Catalog Number:
Ag10584

Conjugate:
Unconjugated

Full name:
alanine-glyoxylate aminotransferase
2-like 1

Gene ID:
64850

Detection Antibody Information

Catalog Number:
83984-4-PBS

Host:
Rabbit

Isotype:
IgG

Purification Method:
Protein A purification

Clone ID:
241119G4

Reactivity:
human

GenBank:
BC022526

Immunogen Catalog Number:
Ag10584

Conjugate:
Unconjugated

Full name:
alanine-glyoxylate aminotransferase
2-like 1

Gene ID:
64850

Applications

Tested Applications:
Cytometric bead array

Range:
0.625-80 ng/mL (Cytometric Bead
Array)

Recommended Dilutions:
It is recommended that this reagent
should be titrated in each testing
system to obtain optimal results.

Product Information

MP00885-2 targets AGXT2L1 in immunoassays as a matched antibody pair. Validated in Cytometric bead array.

Capture antibody: AGXT2L1 Recombinant antibody, PBS Only (Capture) 83984-2-PBS (241119C5). 100 µg.
Concentration 1 mg/ml.

Detection antibody: AGXT2L1 Recombinant antibody, PBS Only (Capture/Detector) 83984-4-PBS (241119G4). 100 µg.
Concentration 1 mg/ml.

Alternative AGXT2L1 matched antibody pairs: MP00885-1, MP00885-3

Unconjugated rabbit recombinant monoclonal antibody pair in PBS only storage buffer at a concentration of 1 mg/mL, ready for conjugation. Created using Proteintech's proprietary in-house recombinant technology. Recombinant production enables unrivalled batch-to-batch consistency, easy scale-up, and future security of supply.

Matched antibody pairs are designed for use in a variety of assays and platforms that require matched antibody pairs.

Antibody use should be optimized for each application and assay.

Storage

Storage:
Store at -80°C.
Storage buffer:
PBS only

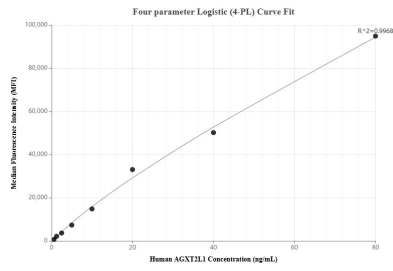
For technical support and original validation data for this product please contact:

T: 1 (888) 4PTGLAB (1-888-478-4522) (toll free
in USA), or 1(312) 455-8498 (outside USA)

E: proteintech@ptglab.com
W: ptglab.com

This product is exclusively available under Proteintech Group brand and is not available to purchase from any other manufacturer.

Selected Validation Data



Cytometric bead array standard curve of MP00885-2, AGXT2L1 Recombinant Matched Antibody Pair, PBS Only. Capture antibody: 83984-2-PBS. Detection antibody: 83984-4-PBS. Standard: Ag10584. Range: 0.625-80 ng/mL.