

For Research Use Only

# NFE2L1 Recombinant Matched Antibody Pair, PBS Only



Catalog Number:MP00878-3

## Capture Antibody Information

**Catalog Number:**  
83987-1-PBS  
**Host:**  
Rabbit  
**Isotype:**  
IgG  
**Purification Method:**  
Protein A purification

**Clone ID:**  
241089A12  
**Reactivity:**  
human  
**Immunogen Catalog Number:**  
Ag0525

**Conjugate:**  
Unconjugated  
**Full name:**  
nuclear factor (erythroid-derived 2)-like 1  
**Gene ID:**  
4779

## Detection Antibody Information

**Catalog Number:**  
83987-4-PBS  
**Host:**  
Rabbit  
**Isotype:**  
IgG  
**Purification Method:**  
Protein A purification

**Clone ID:**  
241089G6  
**Reactivity:**  
human  
**GenBank:**  
BC010623  
**Immunogen Catalog Number:**  
Ag0525

**Conjugate:**  
Unconjugated  
**Full name:**  
nuclear factor (erythroid-derived 2)-like 1  
**Gene ID:**  
4779

## Applications

**Tested Applications:**  
Sandwich ELISA

**Range:**  
0.156-10 ng/mL (Sandwich ELISA)

**Recommended Dilutions:**  
It is recommended that this reagent should be titrated in each testing system to obtain optimal results.

## Product Information

MP00878-3 targets NFE2L1 in immunoassays as a matched antibody pair. Validated in Sandwich ELISA.

Capture antibody: NFE2L1 Recombinant antibody, PBS Only (Capture/Detector) 83987-1-PBS (241089A12). 100 µg. Concentration 1 mg/ml.

Detection antibody: NFE2L1 Recombinant antibody, PBS Only (Detector) 83987-4-PBS (241089G6). 100 µg. Concentration 1 mg/ml.

Alternative NFE2L1 matched antibody pairs: MP00878-1, MP00878-2

Unconjugated rabbit recombinant monoclonal antibody pair in PBS only storage buffer at a concentration of 1 mg/mL, ready for conjugation. Created using Proteintech's proprietary in-house recombinant technology. Recombinant production enables unrivalled batch-to-batch consistency, easy scale-up, and future security of supply.

Matched antibody pairs are designed for use in a variety of assays and platforms that require matched antibody pairs.

Antibody use should be optimized for each application and assay.

## Storage

**Storage:**  
Store at -80°C.  
**Storage buffer:**  
PBS only

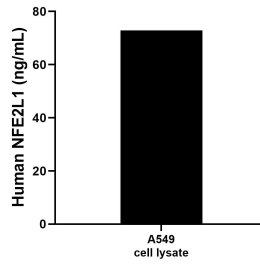
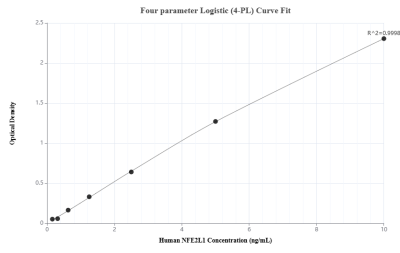
For technical support and original validation data for this product please contact:

T: 1 (888) 4PTGLAB (1-888-478-4522) (toll free in USA), or 1(312) 455-8498 (outside USA)

E: [proteintech@ptglab.com](mailto:proteintech@ptglab.com)  
W: [ptglab.com](http://ptglab.com)

**This product is exclusively available under Proteintech Group brand and is not available to purchase from any other manufacturer.**

## Selected Validation Data



Sandwich ELISA standard curve of MP00878-3, Human NFE2L1 Recombinant Matched Antibody Pair - PBS only. 83987-1-PBS was coated to a plate as the capture antibody and incubated with serial dilutions of standard Ag0525. 83987-4-PBS was HRP conjugated as the detection antibody. Range: 0.156-10 ng/mL

A549 cell lysate was measured. The human NFE2L1 concentration of detected samples was determined to be 72.89 ng/mL (based on a 2.2 mg/mL extract load).