

# ETV4 Recombinant Matched Antibody Pair, PBS Only

Catalog Number:MP00867-2

## Capture Antibody Information

Catalog Number:  
83891-1-PBS

Host:  
Rabbit

Isotype:  
IgG

Purification Method:  
Protein A purification

Clone ID:  
241042A5

Reactivity:  
human

Immunogen Catalog Number:  
Ag0984

Conjugate:  
Unconjugated

Full name:  
ets variant 4

Gene ID:  
2118

## Detection Antibody Information

Catalog Number:  
83891-4-PBS

Host:  
Rabbit

Isotype:  
IgG

Purification Method:  
Protein A purification

Clone ID:  
241042C4

Reactivity:  
human

GenBank:  
BC007242

Immunogen Catalog Number:  
Ag0984

Conjugate:  
Unconjugated

Full name:  
ets variant 4

Gene ID:  
2118

## Applications

Tested Applications:  
Cytometric bead array, Sandwich ELISA

Range:  
0.156-20 ng/mL (Cytometric Bead Array)  
0.313-20 ng/mL (Sandwich ELISA)

Recommended Dilutions:  
It is recommended that this reagent should be titrated in each testing system to obtain optimal results.

## Product Information

MP00867-2 targets ETV4 in immunoassays as a matched antibody pair. Validated in Cytometric bead array, Sandwich ELISA.

Capture antibody: ETV4 Recombinant antibody, PBS Only (Capture) 83891-1-PBS (241042A5). 100 µg. Concentration 1 mg/ml.

Detection antibody: ETV4 Recombinant antibody, PBS Only (Detector) 83891-4-PBS (241042C4). 100 µg. Concentration 1 mg/ml.

Alternative ETV4 matched antibody pairs: MP00867-1, MP00867-3

Unconjugated rabbit recombinant monoclonal antibody pair in PBS only storage buffer at a concentration of 1 mg/mL, ready for conjugation. Created using Proteintech's proprietary in-house recombinant technology. Recombinant production enables unrivalled batch-to-batch consistency, easy scale-up, and future security of supply.

Matched antibody pairs are designed for use in a variety of assays and platforms that require matched antibody pairs.

Antibody use should be optimized for each application and assay.

## Storage

Storage:  
Store at -80°C.  
Storage buffer:  
PBS only

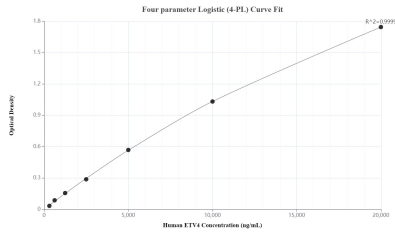
For technical support and original validation data for this product please contact:

T: 1 (888) 4PTGLAB (1-888-478-4522) (toll free in USA), or 1(312) 455-8498 (outside USA)

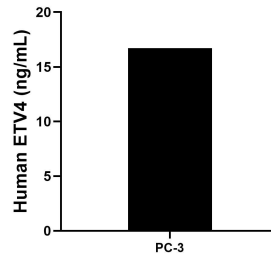
E: proteintech@ptglab.com  
W: ptglab.com

This product is exclusively available under Proteintech Group brand and is not available to purchase from any other manufacturer.

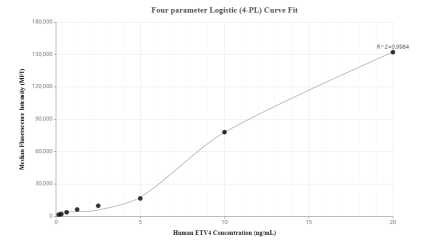
## Selected Validation Data



Sandwich ELISA standard curve of MP00867-2, Human ETV4 Recombinant Matched Antibody Pair - PBS only. 83891-1-PBS was coated to a plate as the capture antibody and incubated with serial dilutions of standard Ag0984. 83891-4-PBS was HRP conjugated as the detection antibody. Range: 0.313-20 ng/mL.



The mean ETV4 concentration was determined to be 16.70 ng/mL in PC-3 cell extract based on a 1.20 mg/mL extract load.



Cytometric bead array standard curve of MP00867-2, ETV4 Recombinant Matched Antibody Pair, PBS Only. Capture antibody: 83891-1-PBS. Detection antibody: 83891-4-PBS. Standard: Ag0984. Range: 0.156-20 ng/mL.