

For Research Use Only

# NUCB2/nesfatin-1 Recombinant Matched Antibody Pair, PBS Only



Catalog Number:MP00864-4

## Capture Antibody Information

Catalog Number:  
83917-1-PBS

Host:  
Rabbit

Isotype:  
IgG

Purification Method:  
Protein A purification

Clone ID:  
241037B1

Reactivity:  
human

Immunogen Catalog Number:  
Ag25152

Conjugate:  
Unconjugated

Full name:  
nucleobindin 2

Gene ID:  
4925

## Detection Antibody Information

Catalog Number:  
83917-6-PBS

Host:  
Rabbit

Isotype:  
IgG

Purification Method:  
Protein A purification

Clone ID:  
241037D4

Reactivity:  
human

GenBank:  
NM\_005013

Immunogen Catalog Number:  
Ag25152

Conjugate:  
Unconjugated

Full name:  
nucleobindin 2

Gene ID:  
4925

## Applications

Tested Applications:  
Sandwich ELISA

Range:  
0.781-25 ng/mL (Sandwich ELISA)

Recommended Dilutions:  
It is recommended that this reagent should be titrated in each testing system to obtain optimal results.

## Product Information

MP00864-4 targets NUCB2/nesfatin-1 in immunoassays as a matched antibody pair. Validated in Sandwich ELISA.

Capture antibody: NUCB2/nesfatin-1 Recombinant antibody, PBS Only (Capture) 83917-1-PBS (241037B1). 100 µg. Concentration 1 mg/ml.

Detection antibody: NUCB2 Recombinant antibody, PBS Only (Detector) 83917-6-PBS (241037D4). 100 µg. Concentration 1 mg/ml.

Alternative NUCB2/nesfatin-1 matched antibody pairs: MP00864-1, MP00864-2, MP00864-3

Unconjugated rabbit recombinant monoclonal antibody pair in PBS only storage buffer at a concentration of 1 mg/mL, ready for conjugation. Created using Proteintech's proprietary in-house recombinant technology. Recombinant production enables unrivalled batch-to-batch consistency, easy scale-up, and future security of supply.

Matched antibody pairs are designed for use in a variety of assays and platforms that require matched antibody pairs.

Antibody use should be optimized for each application and assay.

## Storage

Storage:  
Store at -80°C.  
Storage buffer:  
PBS only

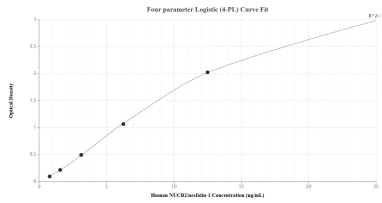
For technical support and original validation data for this product please contact:

T: 1 (888) 4PTGLAB (1-888-478-4522) (toll free in USA), or 1(312) 455-8498 (outside USA)

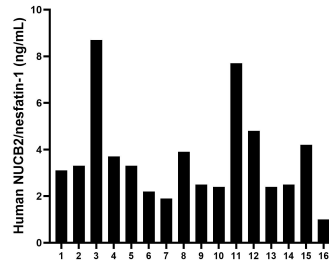
E: [proteintech@ptglab.com](mailto:proteintech@ptglab.com)  
W: [ptglab.com](http://ptglab.com)

This product is exclusively available under Proteintech Group brand and is not available to purchase from any other manufacturer.

## Selected Validation Data



Sandwich ELISA standard curve of MP00864-4, Human NUCB2/nesfatin-1 Recombinant Matched Antibody Pair - PBS only. 83917-1-PBS was coated to a plate as the capture antibody and incubated with serial dilutions of standard Ag25152. 83917-6-PBS was HRP conjugated as the detection antibody. Range: 0.781-25 ng/mL



Serum of sixteen individual healthy human donors was measured. The NUCB2/nesfatin-1 concentration of detected samples was determined to be 3.61 ng/mL with a range of 1.05-8.70 ng/mL