

For Research Use Only

# CD47 Recombinant Matched Antibody Pair, PBS Only



Catalog Number:MP00863-3

## Capture Antibody Information

**Catalog Number:**  
80924-6-PBS  
**Host:**  
Rabbit  
**Isotype:**  
IgG  
**Purification Method:**  
Protein A purification

**Clone ID:**  
240997G1  
**Reactivity:**  
human

**Conjugate:**  
Unconjugated  
**Full name:**  
CD47 molecule  
**Gene ID:**  
961

## Detection Antibody Information

**Catalog Number:**  
80924-5-PBS  
**Host:**  
Rabbit  
**Isotype:**  
IgG  
**Purification Method:**  
Protein A purification

**Clone ID:**  
240997A7  
**Reactivity:**  
human  
**GenBank:**  
BC010016

**Conjugate:**  
Unconjugated  
**Full name:**  
CD47 molecule  
**Gene ID:**  
961

## Applications

**Tested Applications:**  
Sandwich ELISA

**Range:**  
78.1-5000 pg/mL (Sandwich ELISA)

**Recommended Dilutions:**  
It is recommended that this reagent should be titrated in each testing system to obtain optimal results.

## Product Information

MP00863-3 targets CD47 in immunoassays as a matched antibody pair. Validated in Sandwich ELISA.

Capture antibody: CD47 Recombinant antibody, PBS Only (Capture) 80924-6-PBS (240997G1). 100 µg. Concentration 1 mg/ml.

Detection antibody: CD47 Recombinant antibody, PBS Only (Detector) 80924-5-PBS (240997A7). 100 µg. Concentration 1 mg/ml.

Alternative CD47 matched antibody pairs: MP00863-1, MP00863-2

Unconjugated rabbit recombinant monoclonal antibody pair in PBS only storage buffer at a concentration of 1 mg/mL, ready for conjugation. Created using Proteintech's proprietary in-house recombinant technology. Recombinant production enables unrivalled batch-to-batch consistency, easy scale-up, and future security of supply.

Matched antibody pairs are designed for use in a variety of assays and platforms that require matched antibody pairs.

Antibody use should be optimized for each application and assay.

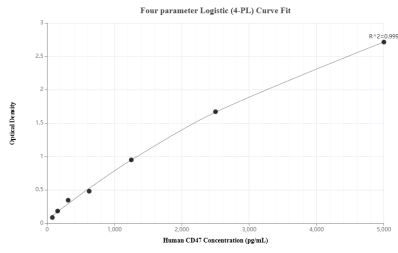
## Storage

**Storage:**  
Store at -80°C.  
**Storage buffer:**  
PBS only

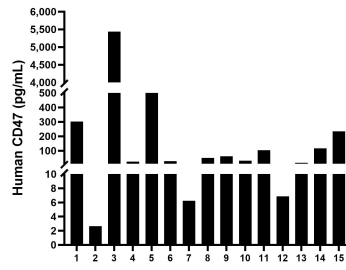
For technical support and original validation data for this product please contact:  
T: 1 (888) 4PTGLAB (1-888-478-4522) (toll free in USA), or 1(312) 455-8498 (outside USA)      E: proteintech@ptglab.com  
W: ptglab.com

This product is exclusively available under Proteintech Group brand and is not available to purchase from any other manufacturer.

## Selected Validation Data



Sandwich ELISA standard curve of MP00863-3, Human CD47 Recombinant Matched Antibody Pair - PBS only. 80924-6-PBS was coated to a plate as the capture antibody and incubated with serial dilutions of standard Eg31499. 80924-5-PBS was HRP conjugated as the detection antibody. Range: 78.1-5000 pg/mL



Serum of fifteen humans was measured. The human CD47 concentration of detected samples was determined to be 496.3 pg/mL with a range of 2.6 - 5,435.9 pg/mL.