

For Research Use Only

# B7H6 Recombinant Matched Antibody Pair, PBS Only



Catalog Number:MP00851-2

## Capture Antibody Information

Catalog Number:

83908-1-PBS

Host:

Rabbit

Isotype:

IgG

Purification Method:

Protein A purification

Clone ID:

240808C5

Reactivity:

human

Conjugate:

Unconjugated

Full name:

hypothetical protein

DKFZp686O24166

Gene ID:

374383

## Detection Antibody Information

Catalog Number:

83908-5-PBS

Host:

Rabbit

Isotype:

IgG

Purification Method:

Protein A purification

Clone ID:

240808F3

Reactivity:

human

GenBank:

BC136800

Conjugate:

Unconjugated

Full name:

hypothetical protein

DKFZp686O24166

Gene ID:

374383

## Applications

Tested Applications:

Sandwich ELISA

Range:

62.5-4000 pg/mL (Sandwich ELISA)

Recommended Dilutions:

It is recommended that this reagent should be titrated in each testing system to obtain optimal results.

## Product Information

MP00851-2 targets B7H6 in immunoassays as a matched antibody pair. Validated in Sandwich ELISA.

Capture antibody: B7H6 Recombinant antibody, PBS Only (Capture) 83908-1-PBS (240808C5). 100 µg. Concentration 1 mg/mL.

Detection antibody: B7H6 Recombinant antibody, PBS Only (Detector) 83908-5-PBS (240808F3). 100 µg. Concentration 1 mg/mL.

Alternative B7H6 matched antibody pairs: MP00851-1

Unconjugated rabbit recombinant monoclonal antibody pair in PBS only storage buffer at a concentration of 1 mg/mL, ready for conjugation. Created using Proteintech's proprietary in-house recombinant technology.

Recombinant production enables unrivalled batch-to-batch consistency, easy scale-up, and future security of supply.

Matched antibody pairs are designed for use in a variety of assays and platforms that require matched antibody pairs.

Antibody use should be optimized for each application and assay.

## Storage

Storage:

Store at -80°C.

Storage buffer:

PBS only

For technical support and original validation data for this product please contact:

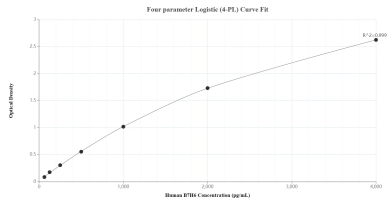
T: 1 (888) 4PTGLAB (1-888-478-4522) (toll free in USA), or 1(312) 455-8498 (outside USA)

E: [proteintech@ptglab.com](mailto:proteintech@ptglab.com)

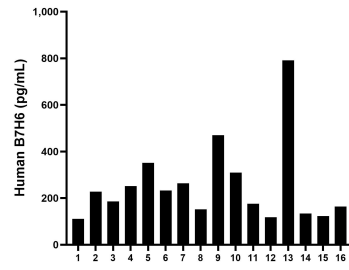
W: [ptglab.com](http://ptglab.com)

This product is exclusively available under Proteintech Group brand and is not available to purchase from any other manufacturer.

## Selected Validation Data



Sandwich ELISA standard curve of MP00851-2, Human B7H6 Recombinant Matched Antibody Pair - PBS only. 83908-1-PBS was coated to a plate as the capture antibody and incubated with serial dilutions of standard Eg0007. 83908-5-PBS was HRP conjugated as the detection antibody. Range: 62.5-4000 pg/mL.



Serum of sixteen individual healthy human donors was measured. The B7H6 concentration of detected samples was determined to be 253.6 pg/mL with a range of 110.6 - 790.9 pg/mL.