

For Research Use Only

# Mouse PD-L1/B7-H1 Recombinant Matched Antibody Pair, PBS Only



Catalog Number:MP00844-2

## Capture Antibody Information

Catalog Number:  
83906-4-PBS

Host:  
Rabbit

Isotype:  
IgG

Purification Method:  
Protein A purification

Clone ID:  
240993H1

Reactivity:  
mouse

Conjugate:  
Unconjugated

Full name:  
CD274 antigen

Gene ID:  
60533

## Detection Antibody Information

Catalog Number:  
83906-1-PBS

Host:  
Rabbit

Isotype:  
IgG

Purification Method:  
Protein A purification

Clone ID:  
240993E1

Reactivity:  
mouse

GenBank:  
NM\_021893.3

Conjugate:  
Unconjugated

Full name:  
CD274 antigen

Gene ID:  
60533

## Applications

Tested Applications:  
Cytometric bead array, Sandwich ELISA

Range:  
0.313-40 ng/mL (Cytometric Bead Array)  
4.69-300 pg/mL (Sandwich ELISA)

Recommended Dilutions:  
It is recommended that this reagent should be titrated in each testing system to obtain optimal results.

## Product Information

MP00844-2 targets PD-L1/B7-H1 in immunoassays as a matched antibody pair. Validated in Cytometric bead array, Sandwich ELISA.

Capture antibody: Mouse PD-L1/B7-H1 Recombinant antibody, PBS Only (Capture) 83906-4-PBS (240993H1). 100 µg. Concentration 1 mg/ml.

Detection antibody: Mouse PD-L1/B7-H1 Recombinant antibody, PBS Only (Detector) 83906-1-PBS (240993E1). 100 µg. Concentration 1 mg/ml.

Alternative PD-L1/B7-H1 matched antibody pairs: MP00844-1, MP00844-3

Unconjugated rabbit recombinant monoclonal antibody pair in PBS only storage buffer at a concentration of 1 mg/mL, ready for conjugation. Created using Proteintech's proprietary in-house recombinant technology. Recombinant production enables unrivalled batch-to-batch consistency, easy scale-up, and future security of supply.

Matched antibody pairs are designed for use in a variety of assays and platforms that require matched antibody pairs.

Antibody use should be optimized for each application and assay.

## Storage

Storage:  
Store at -80°C.  
Storage buffer:  
PBS only

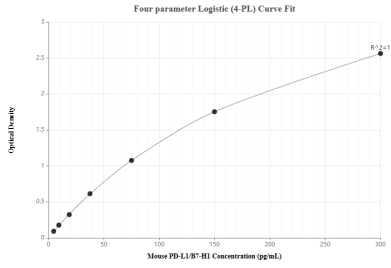
For technical support and original validation data for this product please contact:

T: 1 (888) 4PTGLAB (1-888-478-4522) (toll free in USA), or 1(312) 455-8498 (outside USA)

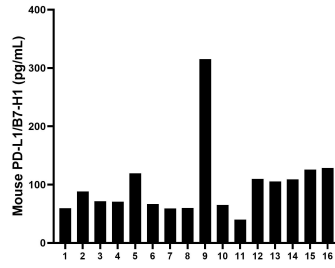
E: [proteintech@ptglab.com](mailto:proteintech@ptglab.com)  
W: [ptglab.com](http://ptglab.com)

This product is exclusively available under Proteintech Group brand and is not available to purchase from any other manufacturer.

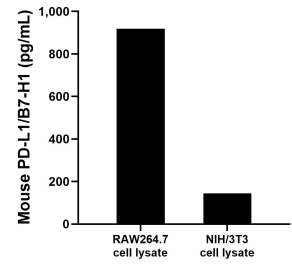
## Selected Validation Data



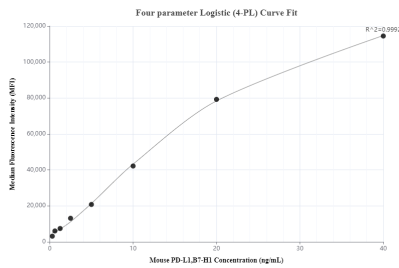
Sandwich ELISA standard curve of MP00844-2, Mouse PD-L1/B7-H1 Recombinant Matched Antibody Pair - PBS only. 83906-4-PBS was coated to a plate as the capture antibody and incubated with serial dilutions of standard Eg0986. 83906-1-PBS was HRP conjugated as the detection antibody. Range: 4.69-300 pg/mL



Serum of sixteen individual healthy human donors was measured. The mouse PD-L1/B7-H1 concentration of detected samples was determined to be 99.6 pg/mL with a range of 40.12 - 315.13 pg/mL.



RAW264.7 and NIH/3T3 cell lysate were measured. The mouse PD-L1/B7-H1 concentration was determined to be 918.7 pg/mL in RAW264.7 cell lysate (based on a 4.8 mg/mL extract load) and 144.6 pg/mL in NIH/3T3 cell lysate (based on a 10.6 mg/mL extract load).



Cytometric bead array standard curve of MP00844-2, MOUSE PD-L1/B7-H1 Recombinant Matched Antibody Pair, PBS Only. Capture antibody: 83906-4-PBS. Detection antibody: 83906-1-PBS. Standard: Eg0986. Range: 0.313-40 ng/mL