

PLIN1 Recombinant Matched Antibody Pair, PBS Only

Catalog Number:MP00840-2

Capture Antibody Information

Catalog Number:

83905-3-PBS

Host:

Rabbit

Isotype:

IgG

Purification Method:

Protein A purification

Clone ID:

240994H8

Reactivity:

human

Immunogen Catalog Number:

Ag26426

Conjugate:

Unconjugated

Full name:

perilipin

Gene ID:

5346

Detection Antibody Information

Catalog Number:

83905-1-PBS

Host:

Rabbit

Isotype:

IgG

Purification Method:

Protein A purification

Clone ID:

240994B2

Reactivity:

human

GenBank:

NM_001145311

Immunogen Catalog Number:

Ag26426

Conjugate:

Unconjugated

Full name:

perilipin

Gene ID:

5346

Applications

Tested Applications:

Cytometric bead array, Sandwich ELISA

Range:

0.156-20 ng/mL (Cytometric Bead Array)
0.156-10 ng/mL (Sandwich ELISA)

Recommended Dilutions:

It is recommended that this reagent should be titrated in each testing system to obtain optimal results.

Product Information

MP00840-2 targets PLIN1 in immunoassays as a matched antibody pair. Validated in Cytometric bead array, Sandwich ELISA.

Capture antibody: Perilipin 1 Recombinant antibody, PBS Only (Capture) 83905-3-PBS (240994H8). 100 µg. Concentration 1 mg/ml.

Detection antibody: Perilipin 1 Recombinant antibody, PBS Only (Capture/Detector) 83905-1-PBS (240994B2). 100 µg. Concentration 1 mg/ml.

Alternative PLIN1 matched antibody pairs: MP00840-1, MP00840-3, MP50400-1, MP50400-2

Unconjugated rabbit recombinant monoclonal antibody pair in PBS only storage buffer at a concentration of 1 mg/mL, ready for conjugation. Created using Proteintech's proprietary in-house recombinant technology. Recombinant production enables unrivalled batch-to-batch consistency, easy scale-up, and future security of supply.

Matched antibody pairs are designed for use in a variety of assays and platforms that require matched antibody pairs.

Antibody use should be optimized for each application and assay.

Storage

Storage:

Store at -80°C.

Storage buffer:

PBS only

For technical support and original validation data for this product please contact:

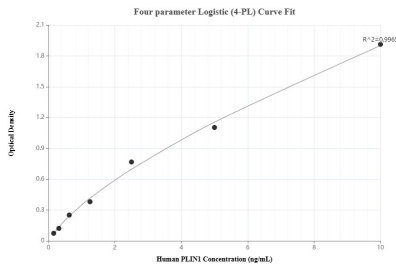
T: 1 (888) 4PTGLAB (1-888-478-4522) (toll free in USA), or 1(312) 455-8498 (outside USA)

E: proteintech@ptglab.com

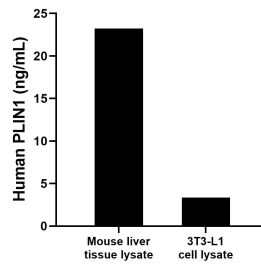
W: ptglab.com

This product is exclusively available under Proteintech Group brand and is not available to purchase from any other manufacturer.

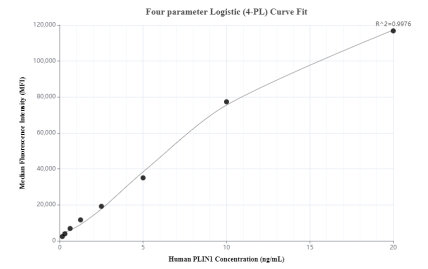
Selected Validation Data



Sandwich ELISA standard curve of MP00840-2, Human PLIN1 Recombinant Matched Antibody Pair - PBS only. 83905-3-PBS was coated to a plate as the capture antibody and incubated with serial dilutions of standard Ag26426. 83905-1-PBS was HRP conjugated as the detection antibody. Range: 0.156-10 ng/mL



Mouse liver tissue lysate was measured. The human PLIN1 concentration in mouse liver tissue lysate was determined to be 23.24 ng/mL (based on a 3.70 mg/mL extract load). 3T3-L1 cell lysate was measured. The human PLIN1 concentration in 3T3-L1 cell lysate was determined to be 3.35 ng/mL (based on a 3.40 mg/mL extract load).



Cytometric bead array standard curve of MP00840-2, PLIN1 Recombinant Matched Antibody Pair, PBS Only. Capture antibody: 83905-3-PBS. Detection antibody: 83905-1-PBS. Standard: Ag26426. Range: 0.156-20 ng/mL