

For Research Use Only

PLEC Recombinant Matched Antibody Pair, PBS Only



Catalog Number:MP00839-4

Capture Antibody Information

Catalog Number:
83898-4-PBS
Host:
Rabbit
Isotype:
IgG
Purification Method:
Protein A purification

Clone ID:
240891E5
Reactivity:
human
Immunogen Catalog Number:
Ag29418

Conjugate:
Unconjugated
Full name:
plectin 1, intermediate filament binding protein 500kDa
Gene ID:
5339

Detection Antibody Information

Catalog Number:
83898-1-PBS
Host:
Rabbit
Isotype:
IgG
Purification Method:
Protein A purification

Clone ID:
240891A10
Reactivity:
human
GenBank:
NM_201380
Immunogen Catalog Number:
Ag29418

Conjugate:
Unconjugated
Full name:
plectin 1, intermediate filament binding protein 500kDa
Gene ID:
5339

Applications

Tested Applications:
Sandwich ELISA

Range:
31.25-2000 pg/mL (Sandwich ELISA)

Recommended Dilutions:
It is recommended that this reagent should be titrated in each testing system to obtain optimal results.

Product Information

MP00839-4 targets PLEC in immunoassays as a matched antibody pair. Validated in Sandwich ELISA.

Capture antibody: PLEC Recombinant antibody, PBS Only (Capture) 83898-4-PBS (240891E5). 100 µg. Concentration 1 mg/ml.

Detection antibody: PLEC Recombinant antibody, PBS Only (Capture/Detector) 83898-1-PBS (240891A10). 100 µg. Concentration 1 mg/ml.

Alternative PLEC matched antibody pairs: MP00839-1, MP00839-2, MP00839-3

Unconjugated rabbit recombinant monoclonal antibody pair in PBS only storage buffer at a concentration of 1 mg/mL, ready for conjugation. Created using Proteintech's proprietary in-house recombinant technology. Recombinant production enables unrivalled batch-to-batch consistency, easy scale-up, and future security of supply.

Matched antibody pairs are designed for use in a variety of assays and platforms that require matched antibody pairs.

Antibody use should be optimized for each application and assay.

Storage

Storage:
Store at -80°C.
Storage buffer:
PBS only

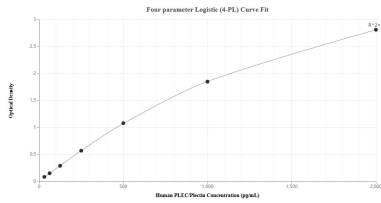
For technical support and original validation data for this product please contact:

T: 1 (888) 4PTGLAB (1-888-478-4522) (toll free in USA), or 1(312) 455-8498 (outside USA)

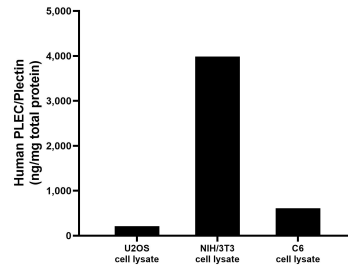
E: proteintech@ptglab.com
W: ptglab.com

This product is exclusively available under Proteintech Group brand and is not available to purchase from any other manufacturer.

Selected Validation Data



Sandwich ELISA standard curve of MP00839-4, Human PLEC/Plectin Recombinant Matched Antibody Pair - PBS only. 83898-4-PBS was coated to a plate as the capture antibody and incubated with serial dilutions of standard Ag29418. 83898-1-PBS was HRP conjugated as the detection antibody. Range: 31.25-2000 pg/mL



U2OS cell lysate, NIH/3T3 cell lysate and C6 cell lysate were measured. The human PLEC/Plectin concentration was determined to be 212.14 ng/mg total protein in U2OS cell lysate, 3,895.97 ng/mg total protein in NIH/3T3 cell lysate and 609.19 ng/mg total protein in C6 cell lysate.