

For Research Use Only

# IL2RA Recombinant Matched Antibody Pair, PBS Only



Catalog Number:MP00837-3

## Capture Antibody Information

Catalog Number:  
83896-5-PBS

Host:  
Rabbit

Isotype:  
IgG

Purification Method:  
Protein A purification

Clone ID:  
240906E5

Reactivity:  
human

Conjugate:  
Unconjugated

Full name:  
interleukin 2 receptor, alpha

Gene ID:  
3559

## Detection Antibody Information

Catalog Number:  
83896-6-PBS

Host:  
Rabbit

Isotype:  
IgG

Purification Method:  
Protein A purification

Clone ID:  
240906D7

Reactivity:  
human

GenBank:  
BC156627

Conjugate:  
Unconjugated

Full name:  
interleukin 2 receptor, alpha

Gene ID:  
3559

## Applications

Tested Applications:  
Sandwich ELISA

Range:  
31.25-2000 pg/mL (Sandwich ELISA)

Recommended Dilutions:  
It is recommended that this reagent should be titrated in each testing system to obtain optimal results.

## Product Information

MP00837-3 targets IL2RA in immunoassays as a matched antibody pair. Validated in Sandwich ELISA.

Capture antibody: IL2RA Recombinant antibody, PBS Only (Capture) 83896-5-PBS (240906E5). 100 µg. Concentration 1 mg/mL.

Detection antibody: IL2RA Recombinant antibody, PBS Only (Detector) 83896-6-PBS (240906D7). 100 µg. Concentration 1 mg/mL.

Alternative IL2RA matched antibody pairs: MP00837-1, MP00837-2, MP50073-1

Unconjugated rabbit recombinant monoclonal antibody pair in PBS only storage buffer at a concentration of 1 mg/mL, ready for conjugation. Created using Proteintech's proprietary in-house recombinant technology. Recombinant production enables unrivalled batch-to-batch consistency, easy scale-up, and future security of supply.

Matched antibody pairs are designed for use in a variety of assays and platforms that require matched antibody pairs.

Antibody use should be optimized for each application and assay.

## Storage

Storage:  
Store at -80°C.  
Storage buffer:  
PBS only

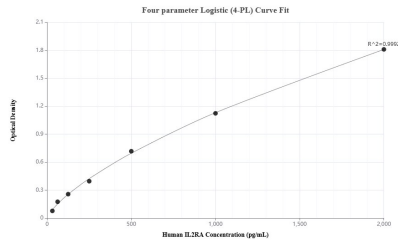
For technical support and original validation data for this product please contact:

T: 1 (888) 4PTGLAB (1-888-478-4522) (toll free in USA), or 1(312) 455-8498 (outside USA)

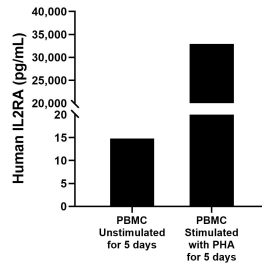
E: [proteintech@ptglab.com](mailto:proteintech@ptglab.com)  
W: [ptglab.com](http://ptglab.com)

**This product is exclusively available under Proteintech Group brand and is not available to purchase from any other manufacturer.**

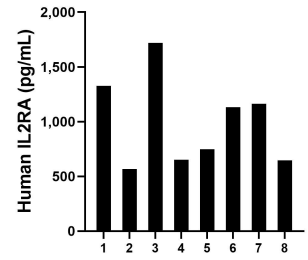
## Selected Validation Data



Sandwich ELISA standard curve of MP00837-3, Human IL2RA Recombinant Matched Antibody Pair - PBS only. 83896-5-PBS was coated to a plate as the capture antibody and incubated with serial dilutions of standard Eg0408. 83896-6-PBS was HRP conjugated as the detection antibody. Range: 31.25-2000 pg/mL



Human peripheral blood mononuclear cells ( $5 \times 10^6$  cells/mL) were cultured in DMEM supplemented with 5% fetal bovine serum, 50  $\mu$ M  $\beta$ -mercaptoethanol, 2 mM L-glutamine, 100 U/mL penicillin, and 100  $\mu$ g/mL streptomycin sulfate. The cells were cultured unstimulated or stimulated with 10  $\mu$ g/mL PHA for 5 days. Aliquots of the cell culture supernates were removed and assayed for levels of human IL2RA.



Serum of eight individual healthy human donors was measured. The human IL2RA concentration of detected samples was determined to be 993.9 pg/mL with a range of 567.3 - 1,718.0 pg/mL.