

For Research Use Only

# PTPRS Recombinant Matched Antibody Pair, PBS Only



Catalog Number:MP00820-4

## Capture Antibody Information

Catalog Number:  
83833-4-PBS

Host:  
Rabbit

Isotype:  
IgG

Purification Method:  
Protein A purification

Clone ID:  
241005H7

Reactivity:  
human

Conjugate:  
Unconjugated

Full name:  
protein tyrosine phosphatase,  
receptor type, S

Gene ID:  
5802

## Detection Antibody Information

Catalog Number:  
83833-1-PBS

Host:  
Rabbit

Isotype:  
IgG

Purification Method:  
Protein A purification

Clone ID:  
241005C4

Reactivity:  
human

GenBank:  
NM\_002850

Conjugate:  
Unconjugated

Full name:  
protein tyrosine phosphatase,  
receptor type, S

Gene ID:  
5802

## Applications

Tested Applications:  
Sandwich ELISA

Range:  
46.8-3000 pg/mL (Sandwich ELISA)

Recommended Dilutions:  
It is recommended that this reagent should be titrated in each testing system to obtain optimal results.

## Product Information

MP00820-4 targets PTPRS in immunoassays as a matched antibody pair. Validated in Sandwich ELISA.

Capture antibody: PTPRS Recombinant antibody, PBS Only (Capture/Detector) 83833-4-PBS (241005H7). 100 µg. Concentration 1 mg/ml.

Detection antibody: PTPRS Recombinant antibody, PBS Only (Capture/Detector) 83833-1-PBS (241005C4). 100 µg. Concentration 1 mg/ml.

Unconjugated rabbit recombinant monoclonal antibody pair in PBS only storage buffer at a concentration of 1 mg/mL, ready for conjugation. Created using Proteintech's proprietary in-house recombinant technology. Recombinant production enables unrivalled batch-to-batch consistency, easy scale-up, and future security of supply.

Matched antibody pairs are designed for use in a variety of assays and platforms that require matched antibody pairs.

Antibody use should be optimized for each application and assay.

## Storage

Storage:  
Store at -80°C.  
Storage buffer:  
PBS only

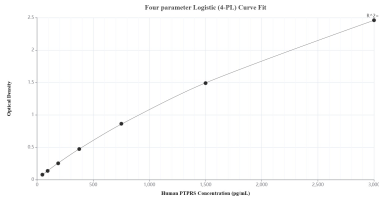
For technical support and original validation data for this product please contact:

T: 1 (888) 4PTGLAB (1-888-478-4522) (toll free in USA), or 1(312) 455-8498 (outside USA)

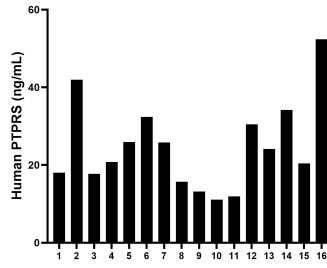
E: [proteintech@ptglab.com](mailto:proteintech@ptglab.com)  
W: [ptglab.com](http://ptglab.com)

This product is exclusively available under Proteintech Group brand and is not available to purchase from any other manufacturer.

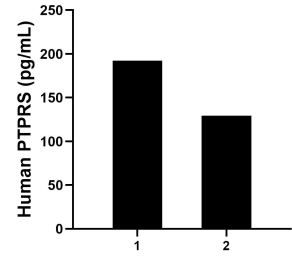
## Selected Validation Data



Sandwich ELISA standard curve of MP00820-4, Human PTPRS Recombinant Matched Antibody Pair - PBS only. 83833-4-PBS was coated to a plate as the capture antibody and incubated with serial dilutions of standard Eg0576. 83833-1-PBS was HRP conjugated as the detection antibody. Range: 46.8-3000 pg/mL



Serum of sixteen individual healthy human donors was measured. The PTPRS concentration of detected samples was determined to be 24.8 ng/mL with a range of 15.7 - 42.0 ng/mL



Cerebrospinal fluid of two individual human donors was measured. The PTPRS concentration of detected samples was determined to be 192.2 pg/mL and 129.3 pg/mL, respectively.