

For Research Use Only

# SLC31A1 Recombinant Matched Antibody Pair, PBS Only



Catalog Number:MP00817-1

## Capture Antibody Information

Catalog Number:  
83844-3-PBS

Host:  
Rabbit

Isotype:  
IgG

Purification Method:  
Protein A purification

Clone ID:  
240868C2

Reactivity:  
human

Immunogen Catalog Number:  
Ag26601

Conjugate:  
Unconjugated

Full name:  
solute carrier family 31 (copper transporters), member 1

Gene ID:  
1317

## Detection Antibody Information

Catalog Number:  
83844-1-PBS

Host:  
Rabbit

Isotype:  
IgG

Purification Method:  
Protein A purification

Clone ID:  
240868A11

Reactivity:  
human

GenBank:  
BC013611

Immunogen Catalog Number:  
Ag26601

Conjugate:  
Unconjugated

Full name:  
solute carrier family 31 (copper transporters), member 1

Gene ID:  
1317

## Applications

Tested Applications:  
Cytometric bead array

Range:  
0.156-20 ng/mL (Cytometric Bead Array)

Recommended Dilutions:  
It is recommended that this reagent should be titrated in each testing system to obtain optimal results.

## Product Information

MP00817-1 targets SLC31A1 in immunoassays as a matched antibody pair. Validated in Cytometric bead array.

Capture antibody: SLC31A1 Recombinant antibody, PBS Only (Capture) 83844-3-PBS (240868C2). 100 µg. Concentration 1 mg/ml.

Detection antibody: SLC31A1 Recombinant antibody, PBS Only (Detector) 83844-1-PBS (240868A11). 100 µg. Concentration 1 mg/ml.

Alternative SLC31A1 matched antibody pairs: MP00817-2, MP00817-3

Unconjugated rabbit recombinant monoclonal antibody pair in PBS only storage buffer at a concentration of 1 mg/mL, ready for conjugation. Created using Proteintech's proprietary in-house recombinant technology. Recombinant production enables unrivalled batch-to-batch consistency, easy scale-up, and future security of supply.

Matched antibody pairs are designed for use in a variety of assays and platforms that require matched antibody pairs.

Antibody use should be optimized for each application and assay.

## Storage

Storage:  
Store at -80°C.  
Storage buffer:  
PBS only

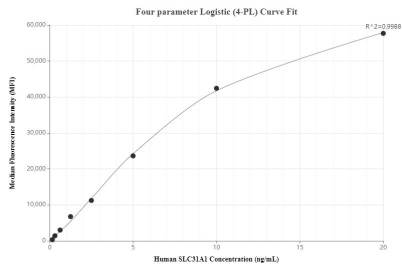
For technical support and original validation data for this product please contact:

T: 1 (888) 4PTGLAB (1-888-478-4522) (toll free in USA), or 1(312) 455-8498 (outside USA)

E: [proteintech@ptglab.com](mailto:proteintech@ptglab.com)  
W: [ptglab.com](http://ptglab.com)

This product is exclusively available under Proteintech Group brand and is not available to purchase from any other manufacturer.

## Selected Validation Data



Cytometric bead array standard curve of MP00817-1, SLC31A1 Recombinant Matched Antibody Pair, PBS Only. Capture antibody: 83844-3-PBS. Detection antibody: 83844-1-PBS. Standard: Ag26601. Range: 0.156-20 ng/mL.