

For Research Use Only



ATP2B1 Recombinant Matched Antibody Pair, PBS Only

Catalog Number:MP00808-1

Capture Antibody Information

Catalog Number:
83827-3-PBS
Host:
Rabbit
Isotype:
IgG
Purification Method:
Protein A purification

Clone ID:
240848D10
Reactivity:
human, mouse
Immunogen Catalog Number:
Ag32423

Conjugate:
Unconjugated
Full name:
ATPase, Ca⁺⁺ transporting, plasma membrane 1
Gene ID:
490

Detection Antibody Information

Catalog Number:
83827-2-PBS
Host:
Rabbit
Isotype:
IgG
Purification Method:
Protein A purification

Clone ID:
240848D2
Reactivity:
human
GenBank:
NM_001001323.1
Immunogen Catalog Number:
Ag32423

Conjugate:
Unconjugated
Full name:
ATPase, Ca⁺⁺ transporting, plasma membrane 1
Gene ID:
490

Applications

Tested Applications:
Cytometric bead array

Range:
0.313-40 ng/mL (Cytometric Bead Array)

Recommended Dilutions:
It is recommended that this reagent should be titrated in each testing system to obtain optimal results.

Product Information

MP00808-1 targets ATP2B1 in immunoassays as a matched antibody pair. Validated in Cytometric bead array.

Capture antibody: ATP2B1 Recombinant antibody, PBS Only (Capture) 83827-3-PBS (240848D10). 100 µg. Concentration 1 mg/ml.

Detection antibody: ATP2B1 Recombinant antibody, PBS Only (Capture/Detector) 83827-2-PBS (240848D2). 100 µg. Concentration 1 mg/ml.

Alternative ATP2B1 matched antibody pairs: MP00808-2, MP00808-3

Unconjugated rabbit recombinant monoclonal antibody pair in PBS only storage buffer at a concentration of 1 mg/mL, ready for conjugation. Created using Proteintech's proprietary in-house recombinant technology. Recombinant production enables unrivalled batch-to-batch consistency, easy scale-up, and future security of supply.

Matched antibody pairs are designed for use in a variety of assays and platforms that require matched antibody pairs.

Antibody use should be optimized for each application and assay.

Storage

Storage:
Store at -80°C.
Storage buffer:
PBS only

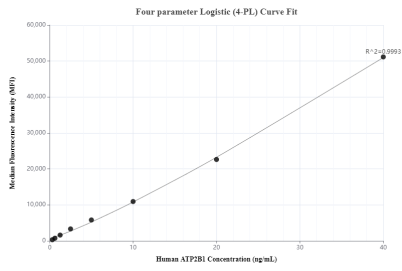
For technical support and original validation data for this product please contact:

T: 1 (888) 4PTGLAB (1-888-478-4522) (toll free in USA), or 1(312) 455-8498 (outside USA)

E: proteintech@ptglab.com
W: ptglab.com

This product is exclusively available under Proteintech Group brand and is not available to purchase from any other manufacturer.

Selected Validation Data



Cytometric bead array standard curve of MP00808-1, ATP2B1 Recombinant Matched Antibody Pair, PBS Only. Capture antibody: 83827-3-PBS. Detection antibody: 83827-2-PBS. Standard: Ag32423. Range: 0.313-40 ng/mL