

For Research Use Only

SOD1 Recombinant Matched Antibody Pair, PBS Only



Catalog Number:MP00799-1

Capture Antibody Information

Catalog Number:
83857-3-PBS
Host:
Rabbit
Isotype:
IgG
Purification Method:
Protein A purification

Clone ID:
240888F11
Reactivity:
human

Conjugate:
Unconjugated
Full name:
superoxide dismutase 1, soluble
Gene ID:
6647

Detection Antibody Information

Catalog Number:
83857-2-PBS
Host:
Rabbit
Isotype:
IgG
Purification Method:
Protein A purification

Clone ID:
240888A12
Reactivity:
human
GenBank:
NM_000454.5

Conjugate:
Unconjugated
Full name:
superoxide dismutase 1, soluble
Gene ID:
6647

Applications

Tested Applications:
Cytometric bead array, Sandwich ELISA

Range:
0.156-20 ng/mL (Cytometric Bead Array)
15.6-1000 pg/mL (Sandwich ELISA)

Recommended Dilutions:
It is recommended that this reagent should be titrated in each testing system to obtain optimal results.

Product Information

MP00799-1 targets SOD1 in immunoassays as a matched antibody pair. Validated in Cytometric bead array, Sandwich ELISA.

Capture antibody: SOD1 Recombinant antibody, PBS Only (Capture) 83857-3-PBS (240888F11). 100 µg. Concentration 1 mg/ml.

Detection antibody: SOD1 Recombinant antibody, PBS Only (Detector) 83857-2-PBS (240888A12). 100 µg. Concentration 1 mg/ml.

Alternative SOD1 matched antibody pairs: MP00799-2, MP00799-3, MP50052-1, MP50052-2

Unconjugated rabbit recombinant monoclonal antibody pair in PBS only storage buffer at a concentration of 1 mg/mL, ready for conjugation. Created using Proteintech's proprietary in-house recombinant technology. Recombinant production enables unrivalled batch-to-batch consistency, easy scale-up, and future security of supply.

Matched antibody pairs are designed for use in a variety of assays and platforms that require matched antibody pairs.

Antibody use should be optimized for each application and assay.

Storage

Storage:
Store at -80°C.
Storage buffer:
PBS only

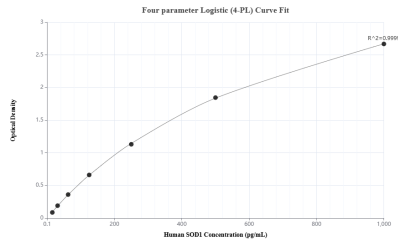
For technical support and original validation data for this product please contact:

T: 1 (888) 4PTGLAB (1-888-478-4522) (toll free in USA), or 1(312) 455-8498 (outside USA)

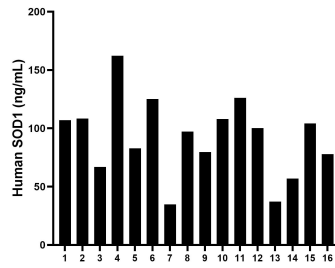
E: proteintech@ptglab.com
W: ptglab.com

This product is exclusively available under Proteintech Group brand and is not available to purchase from any other manufacturer.

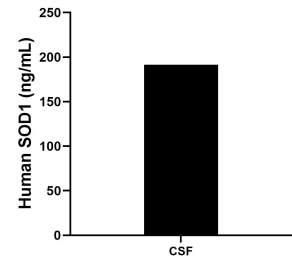
Selected Validation Data



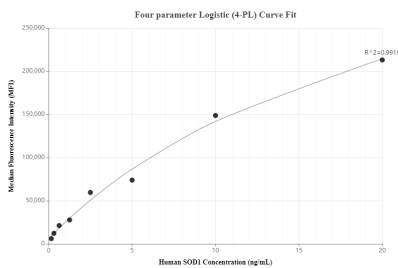
Sandwich ELISA standard curve of MP00799-1, Human SOD1 Recombinant Matched Antibody Pair - PBS only. 83857-3-PBS was coated to a plate as the capture antibody and incubated with serial dilutions of standard Eg1043. 83857-2-PBS was HRP conjugated as the detection antibody. Range: 15.6-1000 pg/mL



Serum of sixteen humans was measured. The human SOD1 concentration of detected samples was determined to be 92.2 ng/mL with a range of 34.8 - 162.3 ng/mL



The human SOD1 concentration in human cerebrospinal fluid was determined to be 191.6 ng/mL.



Cytometric bead array standard curve of MP00799-1, SOD1 Recombinant Matched Antibody Pair, PBS Only. Capture antibody: 83857-3-PBS. Detection antibody: 83857-2-PBS. Standard: Eg1043. Range: 0.156-20 ng/mL