

# DLL3 Recombinant Matched Antibody Pair, PBS Only

Catalog Number:MP00798-2

## Capture Antibody Information

**Catalog Number:**  
83834-3-PBS

**Host:**  
Rabbit

**Isotype:**  
IgG

**Purification Method:**  
Protein A purification

**Clone ID:**  
240956A11

**Reactivity:**  
human

**Immunogen Catalog Number:**  
Ag0579

**Conjugate:**  
Unconjugated

**Full name:**  
delta-like 3 (Drosophila)

**Gene ID:**  
10683

## Detection Antibody Information

**Catalog Number:**  
83834-4-PBS

**Host:**  
Rabbit

**Isotype:**  
IgG

**Purification Method:**  
Protein A purification

**Clone ID:**  
240956G10

**Reactivity:**  
human

**GenBank:**  
BC000218

**Immunogen Catalog Number:**  
Ag0579

**Conjugate:**  
Unconjugated

**Full name:**  
delta-like 3 (Drosophila)

**Gene ID:**  
10683

## Applications

**Tested Applications:**  
Sandwich ELISA

**Range:**  
78.1-5000 pg/mL (Sandwich ELISA)

**Recommended Dilutions:**  
It is recommended that this reagent should be titrated in each testing system to obtain optimal results.

## Product Information

MP00798-2 targets DLL3 in immunoassays as a matched antibody pair. Validated in Sandwich ELISA.

Capture antibody: DLL3 Recombinant antibody, PBS Only (Capture) 83834-3-PBS (240956A11). 100 µg. Concentration 1 mg/ml.

Detection antibody: DLL3 Recombinant antibody, PBS Only (Detector) 83834-4-PBS (240956G10). 100 µg. Concentration 1 mg/ml.

Alternative DLL3 matched antibody pairs: MP00798-1

Unconjugated rabbit recombinant monoclonal antibody pair in PBS only storage buffer at a concentration of 1 mg/mL, ready for conjugation. Created using Proteintech's proprietary in-house recombinant technology. Recombinant production enables unrivalled batch-to-batch consistency, easy scale-up, and future security of supply.

Matched antibody pairs are designed for use in a variety of assays and platforms that require matched antibody pairs.

Antibody use should be optimized for each application and assay.

## Storage

**Storage:**  
Store at -80°C.  
**Storage buffer:**  
PBS only

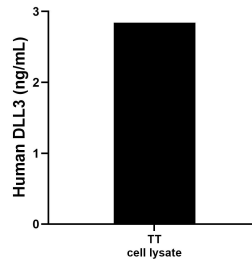
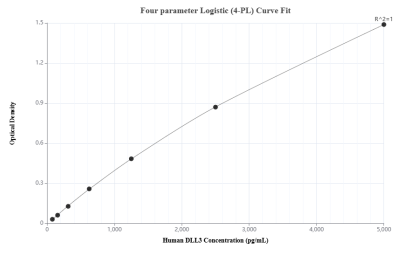
For technical support and original validation data for this product please contact:

T: 1 (888) 4PTGLAB (1-888-478-4522) (toll free in USA), or 1(312) 455-8498 (outside USA)

E: [proteintech@ptglab.com](mailto:proteintech@ptglab.com)  
W: [ptglab.com](http://ptglab.com)

**This product is exclusively available under Proteintech Group brand and is not available to purchase from any other manufacturer.**

## Selected Validation Data



Sandwich ELISA standard curve of MP00798-2, Human DLL3 Recombinant Matched Antibody Pair - PBS only. 83834-3-PBS was coated to a plate as the capture antibody and incubated with serial dilutions of standard Ag0579. 83834-4-PBS was HRP conjugated as the detection antibody. Range: 78.1-5000 pg/mL.

TT cell lysate was measured. The human DLL3 concentration of detected samples was determined to be 2.84 ng/mL (based on a 2.9 mg/mL extract load).