

For Research Use Only

ALDH1A1 Recombinant Matched Antibody Pair, PBS Only



Catalog Number:MP00795-2

Capture Antibody Information

Catalog Number:
83830-3-PBS
Host:
Rabbit
Isotype:
IgG
Purification Method:
Protein A purification

Clone ID:
240995C8
Reactivity:
human
Immunogen Catalog Number:
Ag8665

Conjugate:
Unconjugated
Full name:
aldehyde dehydrogenase 1 family, member A1
Gene ID:
216

Detection Antibody Information

Catalog Number:
83830-2-PBS
Host:
Rabbit
Isotype:
IgG
Purification Method:
Protein A purification

Clone ID:
240995F4
Reactivity:
human, mouse
GenBank:
BC001505
Immunogen Catalog Number:
Ag8665

Conjugate:
Unconjugated
Full name:
aldehyde dehydrogenase 1 family, member A1
Gene ID:
216

Applications

Tested Applications:
Sandwich ELISA

Range:
0.625-20 ng/mL (Sandwich ELISA)

Recommended Dilutions:
It is recommended that this reagent should be titrated in each testing system to obtain optimal results.

Product Information

MP00795-2 targets ALDH1A1 in immunoassays as a matched antibody pair. Validated in Sandwich ELISA.

Capture antibody: ALDH1A1 Recombinant antibody, PBS Only (Capture) 83830-3-PBS (240995C8). 100 µg. Concentration 1 mg/ml.

Detection antibody: ALDH1A1 Recombinant antibody, PBS Only (Detector) 83830-2-PBS (240995F4). 100 µg. Concentration 1 mg/ml.

Alternative ALDH1A1 matched antibody pairs: MP00795-1

Unconjugated rabbit recombinant monoclonal antibody pair in PBS only storage buffer at a concentration of 1 mg/mL, ready for conjugation. Created using Proteintech's proprietary in-house recombinant technology. Recombinant production enables unrivalled batch-to-batch consistency, easy scale-up, and future security of supply.

Matched antibody pairs are designed for use in a variety of assays and platforms that require matched antibody pairs.

Antibody use should be optimized for each application and assay.

Storage

Storage:
Store at -80°C.
Storage buffer:
PBS only

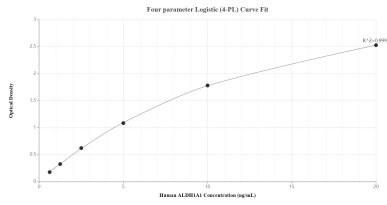
For technical support and original validation data for this product please contact:

T: 1 (888) 4PTGLAB (1-888-478-4522) (toll free in USA), or 1(312) 455-8498 (outside USA)

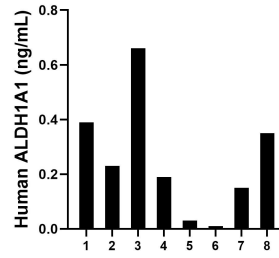
E: proteintech@ptglab.com
W: ptglab.com

This product is exclusively available under Proteintech Group brand and is not available to purchase from any other manufacturer.

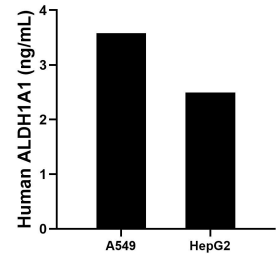
Selected Validation Data



Sandwich ELISA standard curve of MP00795-2, Human ALDH1A1 Recombinant Matched Antibody Pair - PBS only. 83830-3-PBS was coated to a plate as the capture antibody and incubated with serial dilutions of standard Ag8665. 83830-2-PBS was HRP conjugated as the detection antibody. Range: 0.625-20 ng/mL



Serum of eight individual healthy human donors was measured. The ALDH1A1 concentration of detected samples was determined to be 0.25 ng/mL with a range of 0.01-0.66 ng/mL.



The mean ALDH1A1 concentration was determined to be 3.58 ng/mL in A549 cell extract based on a 1.00 mg/mL extract load and 2.49 ng/mL in HepG2 cell extract based on a 1.20 mg/mL extract load.