

For Research Use Only

CLCA1 Recombinant Matched Antibody Pair, PBS Only



Catalog Number:MP00794-4

Capture Antibody Information

Catalog Number:
83829-1-PBS

Host:
Rabbit

Isotype:
IgG

Purification Method:
Protein A purification

Clone ID:
240941A11

Reactivity:
human

Immunogen Catalog Number:
Ag18176

Conjugate:
Unconjugated

Full name:
chloride channel accessory 1

Gene ID:
1179

Detection Antibody Information

Catalog Number:
83829-6-PBS

Host:
Rabbit

Isotype:
IgG

Purification Method:
Protein A purification

Clone ID:
240941G9

Reactivity:
human

GenBank:
BC156805

Immunogen Catalog Number:
Ag18176

Conjugate:
Unconjugated

Full name:
chloride channel accessory 1

Gene ID:
1179

Applications

Tested Applications:
Sandwich ELISA

Range:
0.625-40 ng/mL (Sandwich ELISA)

Recommended Dilutions:
It is recommended that this reagent should be titrated in each testing system to obtain optimal results.

Product Information

MP00794-4 targets CLCA1 in immunoassays as a matched antibody pair. Validated in Sandwich ELISA.

Capture antibody: CLCA1 Recombinant antibody, PBS Only (Capture/Detector) 83829-1-PBS (240941A11). 100 µg. Concentration 1 mg/ml.

Detection antibody: CLCA1 Recombinant antibody, PBS Only (Detector) 83829-6-PBS (240941G9). 100 µg. Concentration 1 mg/ml.

Alternative CLCA1 matched antibody pairs: MP00794-1, MP00794-2, MP00794-3

Unconjugated rabbit recombinant monoclonal antibody pair in PBS only storage buffer at a concentration of 1 mg/mL, ready for conjugation. Created using Proteintech's proprietary in-house recombinant technology. Recombinant production enables unrivalled batch-to-batch consistency, easy scale-up, and future security of supply.

Matched antibody pairs are designed for use in a variety of assays and platforms that require matched antibody pairs.

Antibody use should be optimized for each application and assay.

Storage

Storage:
Store at -80°C.
Storage buffer:
PBS only

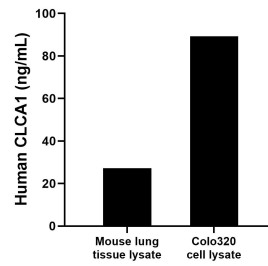
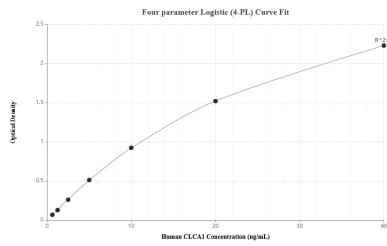
For technical support and original validation data for this product please contact:

T: 1 (888) 4PTGLAB (1-888-478-4522) (toll free in USA), or 1(312) 455-8498 (outside USA)

E: proteintech@ptglab.com
W: ptglab.com

This product is exclusively available under Proteintech Group brand and is not available to purchase from any other manufacturer.

Selected Validation Data



Sandwich ELISA standard curve of MP00794-4, Human CLCA1 Recombinant Matched Antibody Pair - PBS only. 83829-1-PBS was coated to a plate as the capture antibody and incubated with serial dilutions of standard Ag18176. 83829-6-PBS was HRP conjugated as the detection antibody. Range: 0.625-40 ng/mL

Mouse lung tissue lysate and Colo320 cell lysate were measured. The human CLCA1 concentration of detected samples was determined to be 27.24 ng/mL (based on a 1.9 mg/mL extract load) in mouse lung tissue lysate and 89.26 ng/mL (based on a 4.8 mg/mL extract load) in Colo320 cell lysate.