

For Research Use Only

SMAD2 Recombinant Matched Antibody Pair, PBS Only



Catalog Number:MP00791-1

Capture Antibody Information

Catalog Number:

83841-2-PBS

Host:

Rabbit

Isotype:

IgG

Purification Method:

Protein A purification

Clone ID:

240950G3

Reactivity:

human

Immunogen Catalog Number:

Ag3237

Conjugate:

Unconjugated

Full name:

SMAD family member 2

Gene ID:

4087

Detection Antibody Information

Catalog Number:

83841-3-PBS

Host:

Rabbit

Isotype:

IgG

Purification Method:

Protein A purification

Clone ID:

240950G10

Reactivity:

human

GenBank:

BC014840

Immunogen Catalog Number:

Ag3237

Conjugate:

Unconjugated

Full name:

SMAD family member 2

Gene ID:

4087

Applications

Tested Applications:

Cytometric bead array, Sandwich ELISA

Range:

0.469-60 ng/mL (Cytometric Bead Array)
0.313-20 ng/mL (Sandwich ELISA)

Recommended Dilutions:

It is recommended that this reagent should be titrated in each testing system to obtain optimal results.

Product Information

MP00791-1 targets SMAD2 in immunoassays as a matched antibody pair. Validated in Cytometric bead array, Sandwich ELISA.

Capture antibody: SMAD2 Recombinant antibody, PBS Only (Capture) 83841-2-PBS (240950G3). 100 µg. Concentration 1 mg/ml.

Detection antibody: SMAD2 Recombinant antibody, PBS Only (Capture/Detector) 83841-3-PBS (240950G10). 100 µg. Concentration 1 mg/ml.

Alternative SMAD2 matched antibody pairs: MP00791-2, MP00791-3

Unconjugated rabbit recombinant monoclonal antibody pair in PBS only storage buffer at a concentration of 1 mg/mL, ready for conjugation. Created using Proteintech's proprietary in-house recombinant technology. Recombinant production enables unrivalled batch-to-batch consistency, easy scale-up, and future security of supply.

Matched antibody pairs are designed for use in a variety of assays and platforms that require matched antibody pairs.

Antibody use should be optimized for each application and assay.

Storage

Storage:

Store at -80°C.

Storage buffer:

PBS only

For technical support and original validation data for this product please contact:

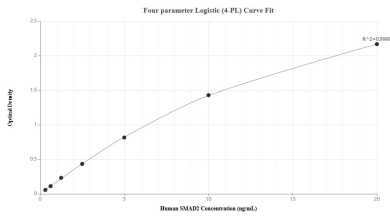
T: 1 (888) 4PTGLAB (1-888-478-4522) (toll free in USA), or 1(312) 455-8498 (outside USA)

E: proteintech@ptglab.com

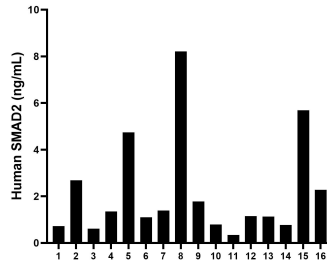
W: ptglab.com

This product is exclusively available under Proteintech Group brand and is not available to purchase from any other manufacturer.

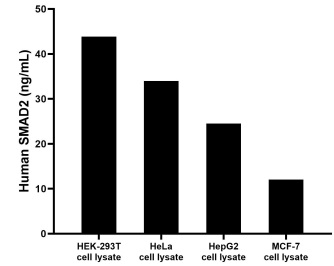
Selected Validation Data



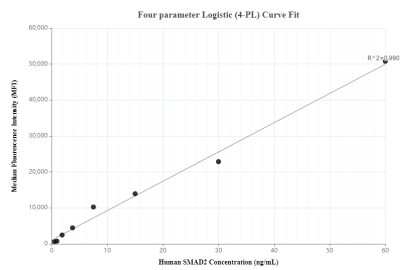
Sandwich ELISA standard curve of MP00791-1, Human SMAD2 Recombinant Matched Antibody Pair - PBS only. 83841-2-PBS was coated to a plate as the capture antibody and incubated with serial dilutions of standard Ag3237. 83841-3-PBS was HRP conjugated as the detection antibody. Range: 0.313-20 ng/mL



Serum of sixteen individual healthy human donors was measured. The human SMAD2 concentration of detected samples was determined to be 2.17 ng/mL with a range of 0.34 - 8.22 ng/mL



HEK-293T, HeLa, HepG2 and MCF-7 cell lysates were measured. The human SMAD2 concentration of detected samples was determined to be 43.85 ng/mL in HEK-293T cell lysate (based on a 5.5 mg/mL extract load). The human SMAD2 concentration of detected samples was determined to be 33.98 ng/mL in HeLa cell lysate (based on a 7 mg/mL extract load). The human SMAD2 concentration of detected samples was determined to be 24.50 ng/mL in HepG2 cell



Cytometric bead array standard curve of MP00791-1, SMAD2 Recombinant Matched Antibody Pair, PBS Only. Capture antibody: 83841-2-PBS. Detection antibody: 83841-3-PBS. Standard: Ag3237. Range: 0.469-60 ng/mL