

For Research Use Only

RPS17 Recombinant Matched Antibody Pair, PBS Only



Catalog Number:MP00785-1

Capture Antibody Information

Catalog Number:
83848-1-PBS

Host:
Rabbit

Isotype:
IgG

Purification Method:
Protein A purification

Clone ID:
240851B3

Reactivity:
human

Immunogen Catalog Number:
Ag9334

Conjugate:
Unconjugated

Full name:
ribosomal protein S17

Gene ID:
6218

Detection Antibody Information

Catalog Number:
83848-2-PBS

Host:
Rabbit

Isotype:
IgG

Purification Method:
Protein A purification

Clone ID:
240851D10

Reactivity:
human

GenBank:
BC009407

Immunogen Catalog Number:
Ag9334

Conjugate:
Unconjugated

Full name:
ribosomal protein S17

Gene ID:
6218

Applications

Tested Applications:
Cytometric bead array, Sandwich ELISA

Range:
0.625-40 ng/mL (Cytometric Bead Array)
0.156-10 ng/mL (Sandwich ELISA)

Recommended Dilutions:
It is recommended that this reagent should be titrated in each testing system to obtain optimal results.

Product Information

MP00785-1 targets RPS17 in immunoassays as a matched antibody pair. Validated in Cytometric bead array, Sandwich ELISA.

Capture antibody: RPS17 Recombinant antibody, PBS Only (Capture) 83848-1-PBS (240851B3). 100 µg. Concentration 1 mg/mL.

Detection antibody: RPS17 Recombinant antibody, PBS Only (Detector) 83848-2-PBS (240851D10). 100 µg. Concentration 1 mg/mL.

Alternative RPS17 matched antibody pairs: MP00785-2

Unconjugated rabbit recombinant monoclonal antibody pair in PBS only storage buffer at a concentration of 1 mg/mL, ready for conjugation. Created using Proteintech's proprietary in-house recombinant technology. Recombinant production enables unrivalled batch-to-batch consistency, easy scale-up, and future security of supply.

Matched antibody pairs are designed for use in a variety of assays and platforms that require matched antibody pairs.

Antibody use should be optimized for each application and assay.

Storage

Storage:
Store at -80°C.
Storage buffer:
PBS only

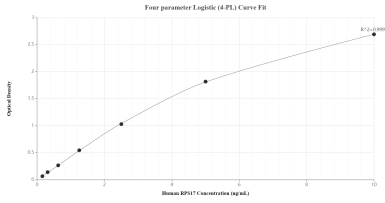
For technical support and original validation data for this product please contact:

T: 1 (888) 4PTGLAB (1-888-478-4522) (toll free in USA), or 1(312) 455-8498 (outside USA)

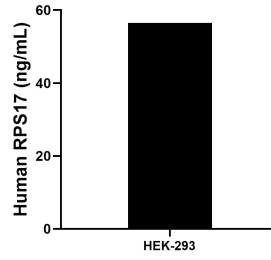
E: proteintech@ptglab.com
W: ptglab.com

This product is exclusively available under Proteintech Group brand and is not available to purchase from any other manufacturer.

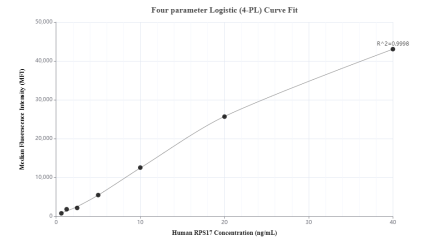
Selected Validation Data



Sandwich ELISA standard curve of MP00785-1, Human RPS17 Recombinant Matched Antibody Pair - PBS only. 83848-1-PBS was coated to a plate as the capture antibody and incubated with serial dilutions of standard Ag9334. 83848-2-PBS was HRP conjugated as the detection antibody. Range: 0.156-10 ng/mL



The mean RPS17 concentration was determined to be 56.46 ng/mL in HEK-293 cell extract based on a 1.20 mg/mL extract load.



Cytometric bead array standard curve of MP00785-1, RPS17 Recombinant Matched Antibody Pair, PBS Only. Capture antibody: 83848-1-PBS. Detection antibody: 83848-2-PBS. Standard: Ag9334. Range: 0.625-40 ng/mL