

For Research Use Only

# Haptoglobin Recombinant Matched Antibody Pair, PBS Only



Catalog Number:MP00779-1

## Capture Antibody Information

Catalog Number:  
82812-8-PBS

Host:  
Rabbit

Isotype:  
IgG

Purification Method:  
Protein A purification

Clone ID:  
1B16

Reactivity:  
human

Conjugate:  
Unconjugated

Full name:  
haptoglobin

Gene ID:  
3240

## Detection Antibody Information

Catalog Number:  
82812-2-PBS

Host:  
Rabbit

Isotype:  
IgG

Purification Method:  
Protein A purification

Clone ID:  
3J2

Reactivity:  
human

GenBank:  
BC121125

Conjugate:  
Unconjugated

Full name:  
haptoglobin

Gene ID:  
3240

## Applications

Tested Applications:  
Sandwich ELISA

Range:  
46.9-3000 pg/mL (Sandwich ELISA)

Recommended Dilutions:  
It is recommended that this reagent should be titrated in each testing system to obtain optimal results.

## Product Information

MP00779-1 targets Haptoglobin in immunoassays as a matched antibody pair. Validated in Sandwich ELISA.

Capture antibody: HP Recombinant antibody, PBS Only (Capture) 82812-8-PBS (1B16). 100 µg. Concentration 1 mg/mL.

Detection antibody: HP Recombinant antibody, PBS Only (Detector) 82812-2-PBS (3J2). 100 µg. Concentration 1 mg/mL.

Alternative Haptoglobin matched antibody pairs: MP00665-1, MP00665-2, MP00665-3

Unconjugated rabbit recombinant monoclonal antibody pair in PBS only storage buffer at a concentration of 1 mg/mL, ready for conjugation. Created using Proteintech's proprietary in-house recombinant technology. Recombinant production enables unrivalled batch-to-batch consistency, easy scale-up, and future security of supply.

Matched antibody pairs are designed for use in a variety of assays and platforms that require matched antibody pairs.

Antibody use should be optimized for each application and assay.

## Storage

Storage:  
Store at -80°C.  
Storage buffer:  
PBS only

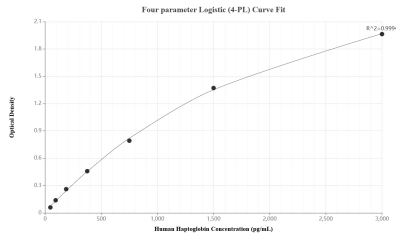
For technical support and original validation data for this product please contact:

T: 1 (888) 4PTGLAB (1-888-478-4522) (toll free in USA), or 1(312) 455-8498 (outside USA)

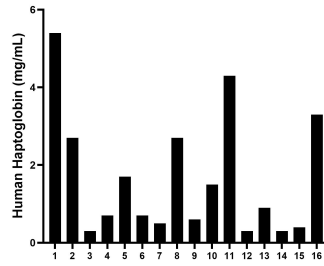
E: [proteintech@ptglab.com](mailto:proteintech@ptglab.com)  
W: [ptglab.com](http://ptglab.com)

This product is exclusively available under Proteintech Group brand and is not available to purchase from any other manufacturer.

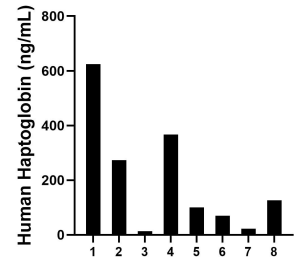
## Selected Validation Data



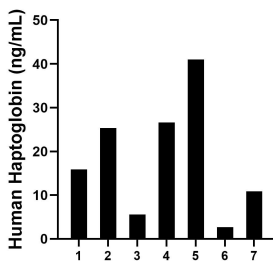
Sandwich ELISA standard curve of MP00779-1, Human Haptoglobin Recombinant Matched Antibody Pair - PBS only. 82812-8-PBS was coated to a plate as the capture antibody and incubated with serial dilutions of standard Eg0445. 82812-2-PBS was HRP conjugated as the detection antibody. Range: 46.9-3000 pg/mL



Serum of sixteen individual healthy human donors was measured. The Haptoglobin concentration of detected samples was determined to be 1.6 mg/mL with a range of 0.3-5.4 mg/mL.



Saliva of eight individual healthy human donors was measured. The Haptoglobin concentration of detected samples was determined to be 199.6 ng/mL with a range of 14.0 - 624.8 ng/mL.



Urine of seven individual healthy human donors was measured. The Haptoglobin concentration of detected samples was determined to be 18.3 ng/mL with a range of 2.7 - 41.0 ng/mL.