

For Research Use Only

PD-L2/B7-DC Recombinant Matched Antibody Pair, PBS Only



Catalog Number:MP00778-4

Capture Antibody Information

Catalog Number:
83158-3-PBS

Host:
Rabbit

Isotype:
IgG

Purification Method:
Protein A purification

Clone ID:
230514C6

Reactivity:
human

Conjugate:
Unconjugated

Full name:
programmed cell death 1 ligand 2

Gene ID:
80380

Detection Antibody Information

Catalog Number:
83158-1-PBS

Host:
Rabbit

Isotype:
IgG

Purification Method:
Protein A purification

Clone ID:
230514A2

Reactivity:
human

GenBank:
BC074766

Conjugate:
Unconjugated

Full name:
programmed cell death 1 ligand 2

Gene ID:
80380

Applications

Tested Applications:
Sandwich ELISA

Range:
15.6-1000 pg/mL (Sandwich ELISA)

Recommended Dilutions:
It is recommended that this reagent should be titrated in each testing system to obtain optimal results.

Product Information

MP00778-4 targets PD-L2/B7-DC in immunoassays as a matched antibody pair. Validated in Sandwich ELISA.

Capture antibody: PD-L2/B7-DC Recombinant antibody, PBS Only (Capture) 83158-3-PBS (230514C6). 100 µg. Concentration 1 mg/ml.

Detection antibody: PD-L2/B7-DC Recombinant antibody, PBS Only (Detector) 83158-1-PBS (230514A2). 100 µg. Concentration 1 mg/ml.

Alternative PD-L2/B7-DC matched antibody pairs: MP00778-1, MP50162-1

Unconjugated rabbit recombinant monoclonal antibody pair in PBS only storage buffer at a concentration of 1 mg/mL, ready for conjugation. Created using Proteintech's proprietary in-house recombinant technology. Recombinant production enables unrivalled batch-to-batch consistency, easy scale-up, and future security of supply.

Matched antibody pairs are designed for use in a variety of assays and platforms that require matched antibody pairs.

Antibody use should be optimized for each application and assay.

Storage

Storage:
Store at -80°C.
Storage buffer:
PBS only

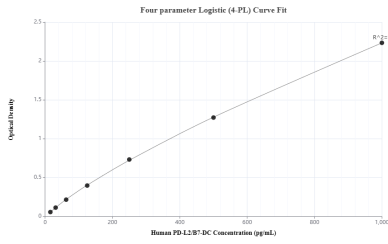
For technical support and original validation data for this product please contact:

T: 1 (888) 4PTGLAB (1-888-478-4522) (toll free in USA), or 1(312) 455-8498 (outside USA)

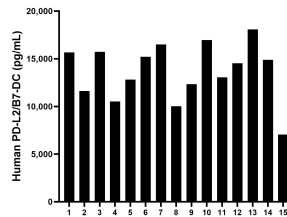
E: proteintech@ptglab.com
W: ptglab.com

This product is exclusively available under Proteintech Group brand and is not available to purchase from any other manufacturer.

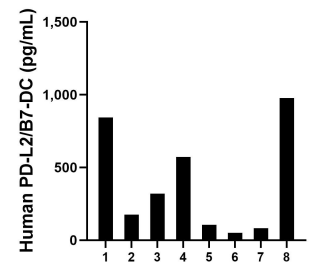
Selected Validation Data



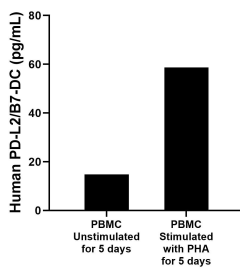
Sandwich ELISA standard curve of MP00778-4, Human PD-L2/B7-DC Monoclonal Matched Antibody Pair - PBS only. 83158-3-PBS was coated to a plate as the capture antibody and incubated with serial dilutions of standard Eg0507. 83158-1-PBS was HRP conjugated as the detection antibody. Range: 15.6-1000 pg/mL



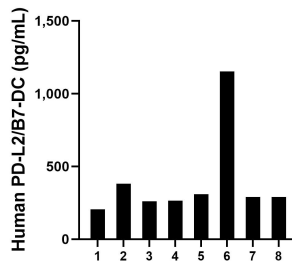
Serum of fifteen individual healthy human donors were measured. The human PD-L2/B7-DC concentration of detected samples was determined to be 13,665.12 pg/mL with a range of 7,054.02 - 18,074.46 pg/mL



Serum of fifteen individual healthy human donors were measured. The human PD-L2/B7-DC concentration of detected samples was determined to be 13,665.12 pg/mL with a range of 7,054.02 - 18,074.46 pg/mL



For the PBMC supernatant cultured for 4 days, the mean PD-L2/B7-DC concentration was determined to be 14.8 pg/mL in unstimulated PBMC supernatant, 58.7 pg/mL in PHA stimulated PBMC supernatant.



Milk of eight individual healthy human donors was measured. The human PD-L2/B7-DC concentration of detected samples was determined to be 394.5 pg/mL with a range of 206.2 - 1,153.2 pg/mL