

# EPAS1 Recombinant Matched Antibody Pair, PBS Only

Catalog Number:MP00775-4

## Capture Antibody Information

**Catalog Number:**

83790-4-PBS

**Host:**

Rabbit

**Isotype:**

IgG

**Purification Method:**

Protein A purification

**Clone ID:**

240736H7

**Reactivity:**

human

**Immunogen Catalog Number:**

Ag15199

**Conjugate:**

Unconjugated

**Full name:**

endothelial PAS domain protein 1

**Gene ID:**

2034

## Detection Antibody Information

**Catalog Number:**

83790-5-PBS

**Host:**

Rabbit

**Isotype:**

IgG

**Purification Method:**

Protein A purification

**Clone ID:**

240736C9

**Reactivity:**

human

**GenBank:**

BC051338

**Immunogen Catalog Number:**

Ag15199

**Conjugate:**

Unconjugated

**Full name:**

endothelial PAS domain protein 1

**Gene ID:**

2034

## Applications

**Tested Applications:**

Sandwich ELISA

**Range:**

62.5-4000 pg/mL (Sandwich ELISA)

**Recommended Dilutions:**

It is recommended that this reagent should be titrated in each testing system to obtain optimal results.

## Product Information

MP00775-4 targets EPAS1 in immunoassays as a matched antibody pair. Validated in Sandwich ELISA.

Capture antibody: EPAS1 Recombinant antibody, PBS Only (Capture) 83790-4-PBS (240736H7). 100 µg. Concentration 1 mg/ml.

Detection antibody: EPAS1 Recombinant antibody, PBS Only (Detector) 83790-5-PBS (240736C9). 100 µg. Concentration 1 mg/ml.

Alternative EPAS1 matched antibody pairs: MP00775-1, MP00775-2, MP00775-3

Unconjugated rabbit recombinant monoclonal antibody pair in PBS only storage buffer at a concentration of 1 mg/mL, ready for conjugation. Created using Proteintech's proprietary in-house recombinant technology. Recombinant production enables unrivalled batch-to-batch consistency, easy scale-up, and future security of supply.

Matched antibody pairs are designed for use in a variety of assays and platforms that require matched antibody pairs.

Antibody use should be optimized for each application and assay.

## Storage

**Storage:**

Store at -80°C.

**Storage buffer:**

PBS only

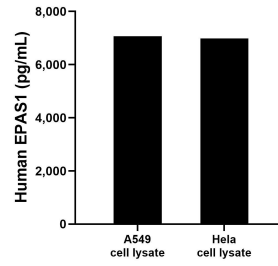
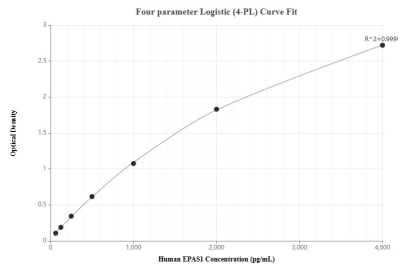
For technical support and original validation data for this product please contact:

T: 1 (888) 4PTGLAB (1-888-478-4522) (toll free in USA), or 1(312) 455-8498 (outside USA)

E: proteintech@ptglab.com  
W: ptglab.com

This product is exclusively available under Proteintech Group brand and is not available to purchase from any other manufacturer.

## Selected Validation Data



Sandwich ELISA standard curve of MP00775-4, Human EPAS1 Recombinant Matched Antibody Pair - PBS only. 83790-4-PBS was coated to a plate as the capture antibody and incubated with serial dilutions of standard Ag15199. 83790-5-PBS was HRP conjugated as the detection antibody. Range: 62.5-4000 pg/mL

A549 and HeLa cell lysates were measured. The human EPAS1 concentration of detected samples was determined to be 7,062.3 pg/mL (based on a 1.00 mg/mL extract load) in A549 cell lysate and 6,988.6 pg/mL (based on a 1.50 mg/mL extract load) in HeLa cell lysate.