

# SETDB1 Recombinant Matched Antibody Pair, PBS Only

Catalog Number:MP00766-4

## Capture Antibody Information

**Catalog Number:**

83772-2-PBS

**Host:**

Rabbit

**Isotype:**

IgG

**Purification Method:**

Protein A purification

**Clone ID:**

240805F5

**Reactivity:**

human

**Immunogen Catalog Number:**

Ag1725

**Conjugate:**

Unconjugated

**Full name:**

SET domain, bifurcated 1

**Gene ID:**

9869

## Detection Antibody Information

**Catalog Number:**

83772-7-PBS

**Host:**

Rabbit

**Isotype:**

IgG

**Purification Method:**

Protein A purification

**Clone ID:**

240805G1

**Reactivity:**

human

**GenBank:**

BC009362

**Immunogen Catalog Number:**

Ag1725

**Conjugate:**

Unconjugated

**Full name:**

SET domain, bifurcated 1

**Gene ID:**

9869

## Applications

**Tested Applications:**

Sandwich ELISA

**Range:**

0.156-10 ng/mL (Sandwich ELISA)

**Recommended Dilutions:**

It is recommended that this reagent should be titrated in each testing system to obtain optimal results.

## Product Information

MP00766-4 targets SETDB1 in immunoassays as a matched antibody pair. Validated in Sandwich ELISA.

Capture antibody: SETDB1 Recombinant antibody, PBS Only (Capture) 83772-2-PBS (240805F5). 100 µg. Concentration 1 mg/ml.

Detection antibody: SETDB1 Recombinant antibody, PBS Only (Detector) 83772-7-PBS (240805G1). 100 µg. Concentration 1 mg/ml.

Alternative SETDB1 matched antibody pairs: MP00766-1, MP00766-2, MP00766-3

Unconjugated rabbit recombinant monoclonal antibody pair in PBS only storage buffer at a concentration of 1 mg/mL, ready for conjugation. Created using Proteintech's proprietary in-house recombinant technology. Recombinant production enables unrivalled batch-to-batch consistency, easy scale-up, and future security of supply.

Matched antibody pairs are designed for use in a variety of assays and platforms that require matched antibody pairs.

Antibody use should be optimized for each application and assay.

## Storage

**Storage:**

Store at -80°C.

**Storage buffer:**

PBS only

For technical support and original validation data for this product please contact:

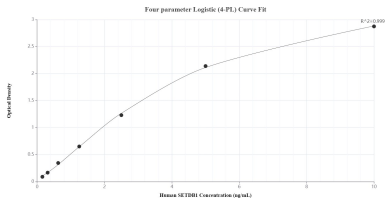
T: 1 (888) 4PTGLAB (1-888-478-4522) (toll free in USA), or 1(312) 455-8498 (outside USA)

E: [proteintech@ptglab.com](mailto:proteintech@ptglab.com)

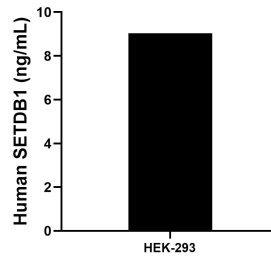
W: [ptglab.com](http://ptglab.com)

**This product is exclusively available under Proteintech Group brand and is not available to purchase from any other manufacturer.**

## Selected Validation Data



Sandwich ELISA standard curve of MP00766-4, Human SETDB1 Recombinant Matched Antibody Pair - PBS only. 83772-2-PBS was coated to a plate as the capture antibody and incubated with serial dilutions of standard Ag1725. 83772-7-PBS was HRP conjugated as the detection antibody. Range: 0.156-10 ng/mL



The mean SETDB1 concentration was determined to be 9.04 ng/mL in HEK-293 cell extract based on a 4.50 mg/mL extract load.