

For Research Use Only

# TBX21,T-bet Recombinant Matched Antibody Pair, PBS Only



Catalog Number:MP00748-1

## Capture Antibody Information

Catalog Number:  
83804-4-PBS

Host:  
Rabbit

Isotype:  
IgG

Purification Method:  
Protein A purification

Clone ID:  
240849D4

Reactivity:  
human

Immunogen Catalog Number:  
Ag4618

Conjugate:  
Unconjugated

Full name:  
T-box 21

Gene ID:  
30009

## Detection Antibody Information

Catalog Number:  
83804-5-PBS

Host:  
Rabbit

Isotype:  
IgG

Purification Method:  
Protein A purification

Clone ID:  
240849E6

Reactivity:  
human

GenBank:  
BC039739

Immunogen Catalog Number:  
Ag4618

Conjugate:  
Unconjugated

Full name:  
T-box 21

Gene ID:  
30009

## Applications

Tested Applications:  
Cytometric bead array, Sandwich ELISA

Range:  
0.313-40 ng/mL (Cytometric Bead Array)  
78.1-5000 pg/mL (Sandwich ELISA)

Recommended Dilutions:  
It is recommended that this reagent should be titrated in each testing system to obtain optimal results.

## Product Information

MP00748-1 targets TBX21,T-bet in immunoassays as a matched antibody pair. Validated in Cytometric bead array, Sandwich ELISA.

Capture antibody: TBX21,T-bet Recombinant antibody, PBS Only (Capture) 83804-4-PBS (240849D4). 100 µg. Concentration 1 mg/ml.

Detection antibody: TBX21,T-bet Recombinant antibody, PBS Only (Detector) 83804-5-PBS (240849E6). 100 µg. Concentration 1 mg/ml.

Alternative TBX21,T-bet matched antibody pairs: MP00748-2, MP00748-3

Unconjugated rabbit recombinant monoclonal antibody pair in PBS only storage buffer at a concentration of 1 mg/mL, ready for conjugation. Created using Proteintech's proprietary in-house recombinant technology. Recombinant production enables unrivalled batch-to-batch consistency, easy scale-up, and future security of supply.

Matched antibody pairs are designed for use in a variety of assays and platforms that require matched antibody pairs.

Antibody use should be optimized for each application and assay.

## Storage

Storage:  
Store at -80°C.  
Storage buffer:  
PBS only

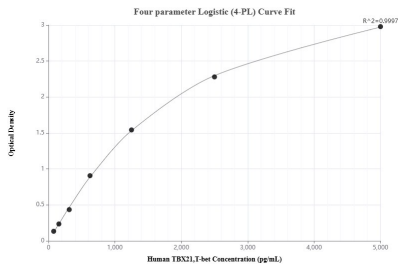
For technical support and original validation data for this product please contact:

T: 1 (888) 4PTGLAB (1-888-478-4522) (toll free in USA), or 1(312) 455-8498 (outside USA)

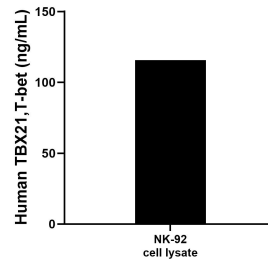
E: [proteintech@ptglab.com](mailto:proteintech@ptglab.com)  
W: [ptglab.com](http://ptglab.com)

This product is exclusively available under Proteintech Group brand and is not available to purchase from any other manufacturer.

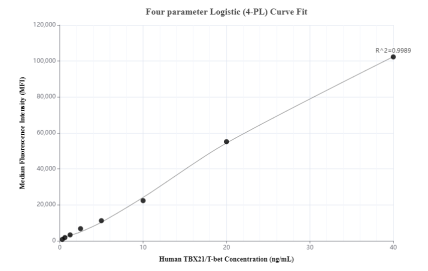
## Selected Validation Data



Sandwich ELISA standard curve of MP00748-1, Human TBX21,T-bet Recombinant Matched Antibody Pair - PBS only. 83804-4-PBS was coated to a plate as the capture antibody and incubated with serial dilutions of standard Ag4618. 83804-5-PBS was HRP conjugated as the detection antibody. Range: 78.1-5000 pg/mL



NK-92 cell lysate was measured. The human TBX21,T-bet concentration of detected samples was determined to be 115.64 ng/mL (based on a 1.5 mg/mL extract load).



Cytometric bead array standard curve of MP00748-1, TBX21,T-bet Recombinant Matched Antibody Pair, PBS Only. Capture antibody: 83804-4-PBS. Detection antibody: 83804-5-PBS. Standard: Ag4618. Range: 0.313-40 ng/mL