

For Research Use Only

Cadherin-17 Recombinant Matched Antibody Pair, PBS Only



Catalog Number:MP00742-4

Capture Antibody Information

Catalog Number:
83793-6-PBS
Host:
Rabbit
Isotype:
IgG
Purification Method:
Protein A purification

Clone ID:
240681B4
Reactivity:
human
Immunogen Catalog Number:
Ag19488

Conjugate:
Unconjugated
Full name:
cadherin 17, LI cadherin (liver-intestine)
Gene ID:
1015

Detection Antibody Information

Catalog Number:
83793-4-PBS
Host:
Rabbit
Isotype:
IgG
Purification Method:
Protein A purification

Clone ID:
240681F7
Reactivity:
human
GenBank:
BC113464
Immunogen Catalog Number:
Ag19488

Conjugate:
Unconjugated
Full name:
cadherin 17, LI cadherin (liver-intestine)
Gene ID:
1015

Applications

Tested Applications:
Sandwich ELISA

Range:
78.1-5000 pg/mL (Sandwich ELISA)

Recommended Dilutions:
It is recommended that this reagent should be titrated in each testing system to obtain optimal results.

Product Information

MP00742-4 targets Cadherin-17 in immunoassays as a matched antibody pair. Validated in Sandwich ELISA.

Capture antibody: CDH17 Recombinant antibody, PBS Only (Capture) 83793-6-PBS (240681B4). 100 µg. Concentration 1 mg/ml.

Detection antibody: CDH17 Recombinant antibody, PBS Only (Capture/Detector) 83793-4-PBS (240681F7). 100 µg. Concentration 1 mg/ml.

Alternative Cadherin-17 matched antibody pairs: MP00742-1, MP00742-2, MP00742-3

Unconjugated rabbit recombinant monoclonal antibody pair in PBS only storage buffer at a concentration of 1 mg/mL, ready for conjugation. Created using Proteintech's proprietary in-house recombinant technology. Recombinant production enables unrivalled batch-to-batch consistency, easy scale-up, and future security of supply.

Matched antibody pairs are designed for use in a variety of assays and platforms that require matched antibody pairs.

Antibody use should be optimized for each application and assay.

Storage

Storage:
Store at -80°C.
Storage buffer:
PBS only

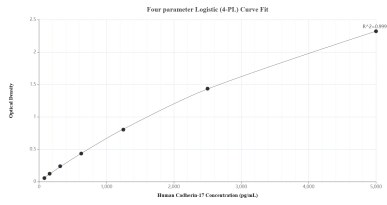
For technical support and original validation data for this product please contact:

T: 1 (888) 4PTGLAB (1-888-478-4522) (toll free in USA), or 1(312) 455-8498 (outside USA)

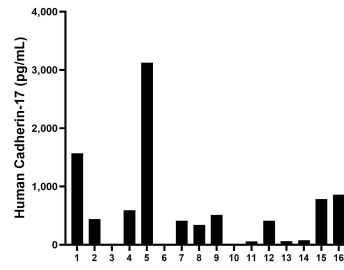
E: proteintech@ptglab.com
W: ptglab.com

This product is exclusively available under Proteintech Group brand and is not available to purchase from any other manufacturer.

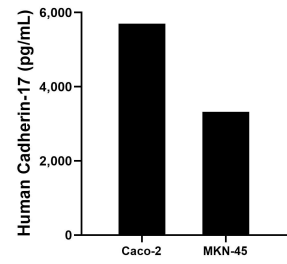
Selected Validation Data



Sandwich ELISA standard curve of MP00742-4, Human Cadherin-17 Recombinant Matched Antibody Pair - PBS only. 83793-6-PBS was coated to a plate as the capture antibody and incubated with serial dilutions of standard Ag19488. 83793-4-PBS was HRP conjugated as the detection antibody. Range: 78.1-5000 pg/mL



Serum of sixteen individual healthy human donors was measured. The Cadherin-17 concentration of detected samples was determined to be 660.0 pg/mL with a range of 3.3 - 3,126.5 pg/mL.



The mean Cadherin-17 concentration was determined to be 5,702.2 pg/mL in Caco-2 cell extract based on a 3.4 mg/mL extract load and 3,322.0 pg/mL in MKN-45 cell extract based on a 9.5 mg/mL extract load.