

For Research Use Only

# CEBPB Recombinant Matched Antibody Pair, PBS Only



Catalog Number:MP00737-3

## Capture Antibody Information

**Catalog Number:**  
83791-4-PBS  
**Host:**  
Rabbit  
**Isotype:**  
IgG  
**Purification Method:**  
Protein A purification

**Clone ID:**  
240836G4  
**Reactivity:**  
human  
**Immunogen Catalog Number:**  
Ag20073

**Conjugate:**  
Unconjugated  
**Full name:**  
CCAAT/enhancer binding protein (C/EBP), beta  
**Gene ID:**  
1051

## Detection Antibody Information

**Catalog Number:**  
83791-3-PBS  
**Host:**  
Rabbit  
**Isotype:**  
IgG  
**Purification Method:**  
Protein A purification

**Clone ID:**  
240836D6  
**Reactivity:**  
human  
**GenBank:**  
BC007538  
**Immunogen Catalog Number:**  
Ag20073

**Conjugate:**  
Unconjugated  
**Full name:**  
CCAAT/enhancer binding protein (C/EBP), beta  
**Gene ID:**  
1051

## Applications

**Tested Applications:**  
Cytometric bead array, Sandwich ELISA

**Range:**  
0.313-40 ng/mL (Cytometric Bead Array)  
31.3-2000 pg/mL (Sandwich ELISA)

**Recommended Dilutions:**  
It is recommended that this reagent should be titrated in each testing system to obtain optimal results.

## Product Information

MP00737-3 targets CEBPB in immunoassays as a matched antibody pair. Validated in Cytometric bead array, Sandwich ELISA.

Capture antibody: CEBPB Recombinant antibody, PBS Only (Capture) 83791-4-PBS (240836G4). 100 µg. Concentration 1 mg/ml.

Detection antibody: CEBPB Recombinant antibody, PBS Only (Detector) 83791-3-PBS (240836D6). 100 µg. Concentration 1 mg/ml.

Alternative CEBPB matched antibody pairs: MP00737-1, MP00737-2

Unconjugated rabbit recombinant monoclonal antibody pair in PBS only storage buffer at a concentration of 1 mg/mL, ready for conjugation. Created using Proteintech's proprietary in-house recombinant technology. Recombinant production enables unrivalled batch-to-batch consistency, easy scale-up, and future security of supply.

Matched antibody pairs are designed for use in a variety of assays and platforms that require matched antibody pairs.

Antibody use should be optimized for each application and assay.

## Storage

**Storage:**  
Store at -80°C.  
**Storage buffer:**  
PBS only

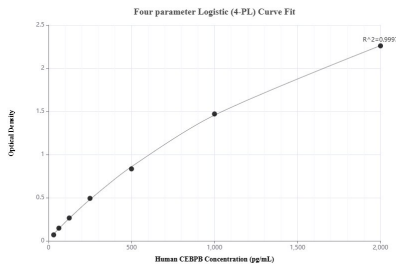
For technical support and original validation data for this product please contact:

T: 1 (888) 4PTGLAB (1-888-478-4522) (toll free in USA), or 1(312) 455-8498 (outside USA)

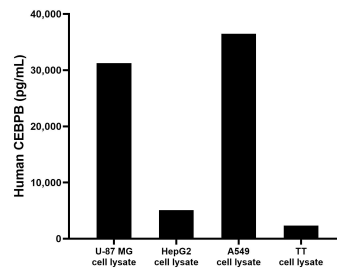
E: [proteintech@ptglab.com](mailto:proteintech@ptglab.com)  
W: [ptglab.com](http://ptglab.com)

**This product is exclusively available under Proteintech Group brand and is not available to purchase from any other manufacturer.**

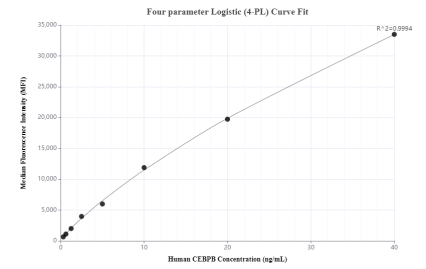
## Selected Validation Data



Sandwich ELISA standard curve of MP00737-3, Human CEBPB Recombinant Matched Antibody Pair - PBS only. 83791-4-PBS was coated to a plate as the capture antibody and incubated with serial dilutions of standard Ag20073. 83791-3-PBS was HRP conjugated as the detection antibody. Range: 31.3-2000 pg/mL



U-87 MG, HepG2, A549 and TT cell lysates were measured. The human CEBPB concentration of detected samples was determined to be 31,247.5 pg/mL (based on a 2.0 mg/mL extract load) in U-87 MG cell lysate, 5,095.4 pg/mL (based on a 1.2 mg/mL extract load) in HepG2 cell lysate, 36,477.3 pg/mL (based on a 1.0 mg/mL extract load) in A549 cell lysate and 2,346.0 ng/mL (based on a 1.0 mg/mL extract load) in TT cell lysate.



Cytometric bead array standard curve of MP00737-3, CEBPB Recombinant Matched Antibody Pair, PBS Only. Capture antibody: 83791-4-PBS. Detection antibody: 83791-3-PBS. Standard: Ag20073. Range: 0.313-40 ng/mL