

For Research Use Only

CTLA-4/CD152 Recombinant Matched Antibody Pair, PBS Only



Catalog Number:MP00736-4

Capture Antibody Information

Catalog Number:
83778-6-PBS
Host:
Rabbit
Isotype:
IgG
Purification Method:
Protein A purification

Clone ID:
240793E6
Reactivity:
human

Conjugate:
Unconjugated
Full name:
cytotoxic T-lymphocyte-associated protein 4
Gene ID:
1493

Detection Antibody Information

Catalog Number:
83778-3-PBS
Host:
Rabbit
Isotype:
IgG
Purification Method:
Protein A purification

Clone ID:
240793F3
Reactivity:
human
GenBank:
BC070162

Conjugate:
Unconjugated
Full name:
cytotoxic T-lymphocyte-associated protein 4
Gene ID:
1493

Applications

Tested Applications:
Sandwich ELISA

Range:
23.4-1500 pg/mL (Sandwich ELISA)

Recommended Dilutions:
It is recommended that this reagent should be titrated in each testing system to obtain optimal results.

Product Information

MP00736-4 targets CTLA-4/CD152 in immunoassays as a matched antibody pair. Validated in Sandwich ELISA.

Capture antibody: CTLA-4/CD152 Recombinant antibody, PBS Only (Capture) 83778-6-PBS (240793E6). 100 µg. Concentration 1 mg/ml.

Detection antibody: CTLA-4/CD152 Recombinant antibody, PBS Only (Detector) 83778-3-PBS (240793F3). 100 µg. Concentration 1 mg/ml.

Alternative CTLA-4/CD152 matched antibody pairs: MP00736-1, MP00736-2, MP00736-3, MP00907-1, MP00907-2, MP00907-3, MP00907-4, MP50106-1, MP50106-2

Unconjugated rabbit recombinant monoclonal antibody pair in PBS only storage buffer at a concentration of 1 mg/mL, ready for conjugation. Created using Proteintech's proprietary in-house recombinant technology. Recombinant production enables unrivalled batch-to-batch consistency, easy scale-up, and future security of supply.

Matched antibody pairs are designed for use in a variety of assays and platforms that require matched antibody pairs.

Antibody use should be optimized for each application and assay.

Storage

Storage:
Store at -80°C.
Storage buffer:
PBS only

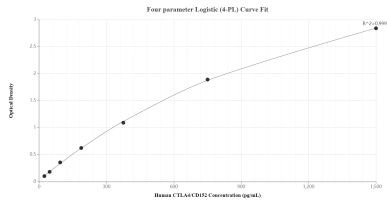
For technical support and original validation data for this product please contact:

T: 1 (888) 4PTGLAB (1-888-478-4522) (toll free in USA), or 1(312) 455-8498 (outside USA)

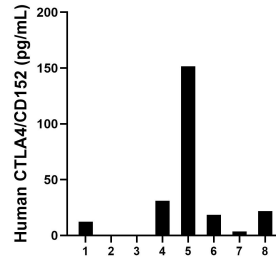
E: proteintech@ptglab.com
W: ptglab.com

This product is exclusively available under Proteintech Group brand and is not available to purchase from any other manufacturer.

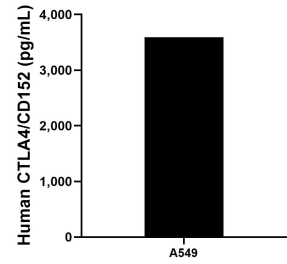
Selected Validation Data



Sandwich ELISA standard curve of MP00736-4, Human CTLA4/CD152 Recombinant Matched Antibody Pair - PBS only. 83778-6-PBS was coated to a plate as the capture antibody and incubated with serial dilutions of standard Eg0972. 83778-3-PBS was HRP conjugated as the detection antibody. Range: 23.4-1500 pg/mL



Serum of eight individual healthy human donors was measured. The human CTLA4/CD152 concentration of detected samples was determined to be 39.8 pg/mL with a range of ND-151.6 pg/mL.



The mean CTLA4/CD152 concentration was determined to be 3,592.9 pg/mL in A549 cell extract based on a 2.2 mg/mL extract load.