

For Research Use Only



Mouse Apolipoprotein E Recombinant Matched Antibody Pair, PBS Only

Catalog Number:MP00712-1

Capture Antibody Information

Catalog Number:
83728-3-PBS
Host:
Rabbit
Isotype:
IgG
Purification Method:
Protein A purification

Clone ID:
240786D7
Reactivity:
mouse

Conjugate:
Unconjugated
Full name:
Apolipoprotein E
Gene ID:
11816

Detection Antibody Information

Catalog Number:
83728-1-PBS
Host:
Rabbit
Isotype:
IgG
Purification Method:
Protein A purification

Clone ID:
240786C6
Reactivity:
mouse
GenBank:
NM_001305819.1

Conjugate:
Unconjugated
Full name:
Apolipoprotein E
Gene ID:
11816

Applications

Tested Applications:
Cytometric bead array, Sandwich ELISA

Range:
0.313-40 ng/mL (Cytometric Bead Array)
0.16-10 ng/mL (Sandwich ELISA)

Recommended Dilutions:
It is recommended that this reagent should be titrated in each testing system to obtain optimal results.

Product Information

MP00712-1 targets Apolipoprotein E in immunoassays as a matched antibody pair. Validated in Cytometric bead array, Sandwich ELISA.

Capture antibody: Mouse Apolipoprotein E Recombinant antibody, PBS Only (Capture) 83728-3-PBS (240786D7). 100 µg. Concentration 1 mg/ml.

Detection antibody: Mouse Apolipoprotein E Recombinant antibody, PBS Only (Detector) 83728-1-PBS (240786C6). 100 µg. Concentration 1 mg/ml.

Alternative Apolipoprotein E matched antibody pairs: MP00712-2

Unconjugated rabbit recombinant monoclonal antibody pair in PBS only storage buffer at a concentration of 1 mg/mL, ready for conjugation. Created using Proteintech's proprietary in-house recombinant technology. Recombinant production enables unrivalled batch-to-batch consistency, easy scale-up, and future security of supply.

Matched antibody pairs are designed for use in a variety of assays and platforms that require matched antibody pairs.

Antibody use should be optimized for each application and assay.

Storage

Storage:
Store at -80°C.
Storage buffer:
PBS only

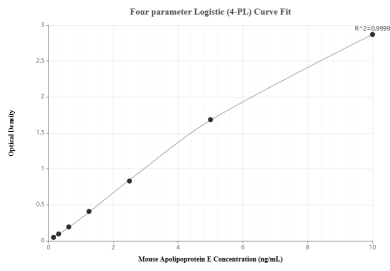
For technical support and original validation data for this product please contact:

T: 1 (888) 4PTGLAB (1-888-478-4522) (toll free in USA), or 1(312) 455-8498 (outside USA)

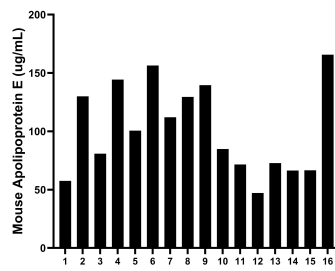
E: proteintech@ptglab.com
W: ptglab.com

This product is exclusively available under Proteintech Group brand and is not available to purchase from any other manufacturer.

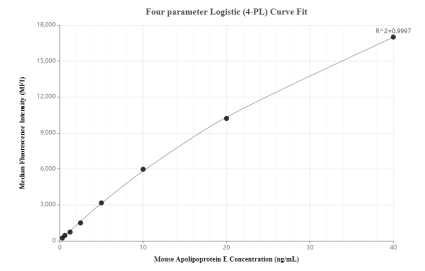
Selected Validation Data



Sandwich ELISA standard curve of MP00712-1, Mouse Apolipoprotein E Recombinant Matched Antibody Pair - PBS only. 83728-3-PBS was coated to a plate as the capture antibody and incubated with serial dilutions of standard Eg0941. 83728-1-PBS was HRP conjugated as the detection antibody. Range: 0.16-10 ng/mL



Serum of sixteen mice was measured. The Apolipoprotein E concentration of detected samples was determined to be 101.6 $\mu\text{g/mL}$ with a range of 47.2 - 165.7 $\mu\text{g/mL}$.



Cytometric bead array standard curve of MP00712-1, MOUSE Apolipoprotein E Recombinant Matched Antibody Pair, PBS Only. Capture antibody: 83728-3-PBS. Detection antibody: 83728-1-PBS. Standard: Eg1093. Range: 0.313-40 ng/mL