

For Research Use Only

# IL1RAP Recombinant Matched Antibody Pair, PBS Only



Catalog Number:MP00708-4

## Capture Antibody Information

**Catalog Number:**  
98073-1-PBS  
**Host:**  
Rabbit  
**Isotype:**  
IgG  
**Purification Method:**  
Protein A purification

**Clone ID:**  
240756A12  
**Reactivity:**  
human

**Conjugate:**  
Unconjugated  
**Full name:**  
interleukin 1 receptor accessory protein  
**Gene ID:**  
3556

## Detection Antibody Information

**Catalog Number:**  
83726-5-PBS  
**Host:**  
Rabbit  
**Isotype:**  
IgG  
**Purification Method:**  
Protein A purification

**Clone ID:**  
240756E7  
**Reactivity:**  
human  
**GenBank:**  
NM\_002182.4

**Conjugate:**  
Unconjugated  
**Full name:**  
interleukin 1 receptor accessory protein  
**Gene ID:**  
3556

## Applications

**Tested Applications:**  
Sandwich ELISA

**Range:**  
7.8-500 pg/mL (Sandwich ELISA)

**Recommended Dilutions:**  
It is recommended that this reagent should be titrated in each testing system to obtain optimal results.

## Product Information

MP00708-4 targets IL1RAP in immunoassays as a matched antibody pair. Validated in Sandwich ELISA.

Capture antibody: Anti-Human IL1RAP Rabbit Recombinant Antibody, PBS Only 98073-1-PBS (240756A12). 100 µg. Concentration 1 mg/ml.

Detection antibody: IL1RAP Recombinant antibody, PBS Only (Detector) 83726-5-PBS (240756E7). 100 µg. Concentration 1 mg/ml.

Alternative IL1RAP matched antibody pairs: MP00708-1, MP00708-2, MP00708-3

Unconjugated rabbit recombinant monoclonal antibody pair in PBS only storage buffer at a concentration of 1 mg/mL, ready for conjugation. Created using Proteintech's proprietary in-house recombinant technology. Recombinant production enables unrivalled batch-to-batch consistency, easy scale-up, and future security of supply.

Matched antibody pairs are designed for use in a variety of assays and platforms that require matched antibody pairs.

Antibody use should be optimized for each application and assay.

## Storage

**Storage:**  
Store at -80°C.  
**Storage buffer:**  
PBS only

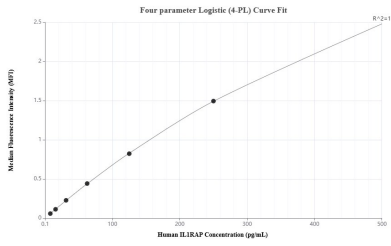
For technical support and original validation data for this product please contact:

T: 1 (888) 4PTGLAB (1-888-478-4522) (toll free in USA), or 1(312) 455-8498 (outside USA)

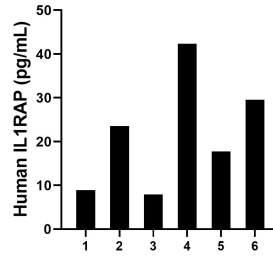
E: [proteintech@ptglab.com](mailto:proteintech@ptglab.com)  
W: [ptglab.com](http://ptglab.com)

**This product is exclusively available under Proteintech Group brand and is not available to purchase from any other manufacturer.**

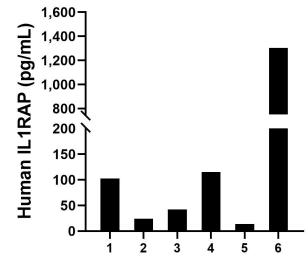
## Selected Validation Data



Sandwich ELISA standard curve of MP00708-4, Human IL1RAP Recombinant Matched Antibody Pair - PBS only. 98073-1-PBS was coated to a plate as the capture antibody and incubated with serial dilutions of standard Eg0827. 83726-5-PBS was HRP conjugated as the detection antibody. Range: 7.8-500 pg/mL



Serum of six individual healthy human donors was measured. The human IL1RAP concentration of detected samples was determined to be 21.67 pg/mL with a range of 7.89 - 42.37 pg/mL.



Plasma of six individual healthy human donors was measured. The human IL1RAP concentration of detected samples was determined to be 266.79 pg/mL with a range of 13.79 - 1,302.80 pg/mL.