

For Research Use Only

# GBP1 Recombinant Matched Antibody Pair, PBS Only



Catalog Number:MP00707-4

## Capture Antibody Information

Catalog Number:  
83751-2-PBS

Host:  
Rabbit

Isotype:  
IgG

Purification Method:  
Protein A purification

Clone ID:  
240634G7

Reactivity:  
human

Immunogen Catalog Number:  
Ag7562

Conjugate:  
Unconjugated

Full name:  
GTP binding protein 1

Gene ID:  
2633

## Detection Antibody Information

Catalog Number:  
83751-4-PBS

Host:  
Rabbit

Isotype:  
IgG

Purification Method:  
Protein A purification

Clone ID:  
240634D12

Reactivity:  
human

GenBank:  
BC002666

Immunogen Catalog Number:  
Ag7562

Conjugate:  
Unconjugated

Full name:  
GTP binding protein 1

Gene ID:  
2633

## Applications

Tested Applications:  
Sandwich ELISA

Range:  
54.68-3500 pg/mL (Sandwich ELISA)

Recommended Dilutions:  
It is recommended that this reagent should be titrated in each testing system to obtain optimal results.

## Product Information

MP00707-4 targets GBP1 in immunoassays as a matched antibody pair. Validated in Sandwich ELISA.

Capture antibody: GBP1 Recombinant antibody, PBS Only (Capture) 83751-2-PBS (240634G7). 100 µg. Concentration 1 mg/ml.

Detection antibody: GBP1 Recombinant antibody, PBS Only (Detector) 83751-4-PBS (240634D12). 100 µg. Concentration 1 mg/ml.

Alternative GBP1 matched antibody pairs: MP00707-1, MP00707-2, MP00707-3

Unconjugated rabbit recombinant monoclonal antibody pair in PBS only storage buffer at a concentration of 1 mg/mL, ready for conjugation. Created using Proteintech's proprietary in-house recombinant technology. Recombinant production enables unrivalled batch-to-batch consistency, easy scale-up, and future security of supply.

Matched antibody pairs are designed for use in a variety of assays and platforms that require matched antibody pairs.

Antibody use should be optimized for each application and assay.

## Storage

Storage:  
Store at -80°C.  
Storage buffer:  
PBS only

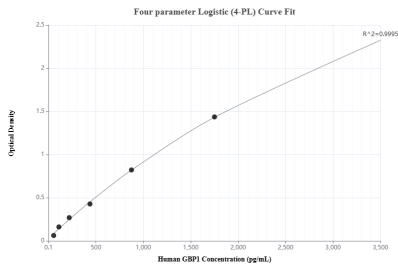
For technical support and original validation data for this product please contact:

T: 1 (888) 4PTGLAB (1-888-478-4522) (toll free in USA), or 1(312) 455-8498 (outside USA)

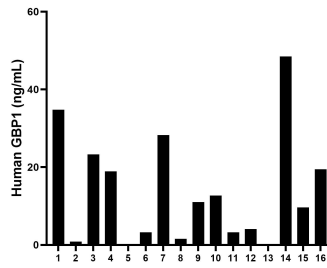
E: [proteintech@ptglab.com](mailto:proteintech@ptglab.com)  
W: [ptglab.com](http://ptglab.com)

This product is exclusively available under Proteintech Group brand and is not available to purchase from any other manufacturer.

## Selected Validation Data



Sandwich ELISA standard curve of MP00707-4, Human GBP1 Recombinant Matched Antibody Pair - PBS only. 83751-2-PBS was coated to a plate as the capture antibody and incubated with serial dilutions of standard Ag7562. 83751-4-PBS was HRP conjugated as the detection antibody. Range: 54.68-3500 pg/mL



Serum of eight individual healthy human donors was measured. The human GBP1 concentration of detected samples was determined to be 14.66 ng/mL with a range of 0.29 - 48.49 ng/mL

SK-OV-3 cells were cultured in DMEM supplemented with 10% fetal bovine serum, 2.5 mM L-glutamine, 100 U/mL penicillin, and 100 µg/mL streptomycin sulfate. Cells were stimulated with 1000 U/ml recombinant human IFN-γ for 48h. An aliquot of the cell culture supernatants was removed, assayed for human GBP1.